

## Lefty rabbit pAb

**Cat#: orb767249 (Manual)**

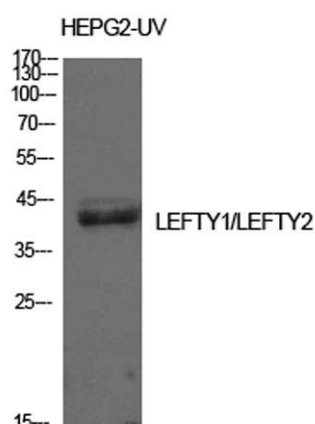
For research use only. Not intended for diagnostic use.

<b>Product Name</b>	Lefty rabbit pAb
<b>Host species</b>	Rabbit
<b>Applications</b>	WB;IHC
<b>Species Cross-Reactivity</b>	Human;Mouse
<b>Recommended dilutions</b>	WB 1:500-2000;IHC-p 1:50-300
<b>Immunogen</b>	The antiserum was produced against synthesized peptide derived from the C-terminal region of human LEFTY1/LEFTY2. AA range:301-350
<b>Specificity</b>	Lefty Polyclonal Antibody detects endogenous levels of Lefty protein.
<b>Formulation</b>	Liquid in PBS containing 50% glycerol, 0.5% BSA and 0.02% sodium azide..
<b>Storage</b>	Store at -20°C. Avoid repeated freeze-thaw cycles.
<b>Protein Name</b>	Left-right determination factor 1/Left-right determination factor 2
<b>Gene Name</b>	LEFTY1/LEFTY2
<b>Cellular localization</b>	Secreted.
<b>Purification</b>	The antibody was affinity-purified from rabbit antiserum by affinity-chromatography using epitope-specific immunogen.
<b>Clonality</b>	Polyclonal

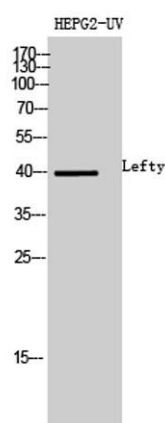
<b>Concentration</b>	1 mg/ml
<b>Observed band</b>	40kD
<b>Human Gene ID</b>	10637/7044
<b>Human Swiss-Prot Number</b>	O75610/O00292
<b>Alternative Names</b>	LEFTY1; LEFTB; LEFTYB; Left-right determination factor 1; Left-right determination factor B; Protein lefty-1; Protein lefty-B; LEFTY2; EBAF; LEFTA; LEFTYA; TGFB4; PSEC0024; Left-right determination factor 2; Endometrial bleeding-associated factor; Left-ri

### Background

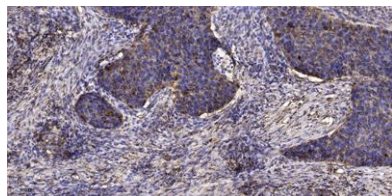
This gene encodes a secreted ligand of the TGF-beta (transforming growth factor-beta) superfamily of proteins. Ligands of this family bind various TGF-beta receptors leading to recruitment and activation of SMAD family transcription factors that regulate gene expression. The encoded preproprotein is proteolytically processed to generate the mature protein, which plays a role in left-right asymmetry determination of organ systems during development. This gene is closely linked to both a related family member and a related pseudogene. [provided by RefSeq, Aug 2016],



**Western Blot analysis of HepG2-UV cells using Lefty Polyclonal Antibody.** Antibody was diluted at 1:500. Secondary antibody(catalog#:RS0002) was diluted at 1:20000



**Western Blot analysis of HepG2-UV cells using Lefty Polyclonal Antibody diluted at 1:500.** Secondary antibody(catalog#:RS0002) was diluted at 1:20000



**Immunohistochemical analysis of paraffin-embedded human Squamous cell carcinoma of lung. 1, Antibody was diluted at 1:200(4° overnight). 2, Tris-EDTA,pH9.0 was used for antigen retrieval. 3,Secondary antibody was diluted at 1:200(room temperature, 45min).**