

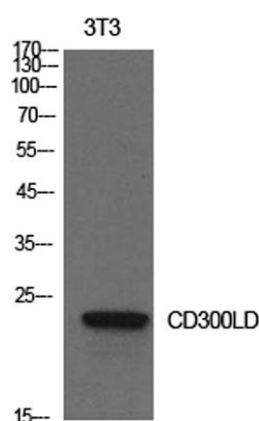
**CD300d rabbit pAb****Cat#: orb767241 (Manual)**

For research use only. Not intended for diagnostic use.

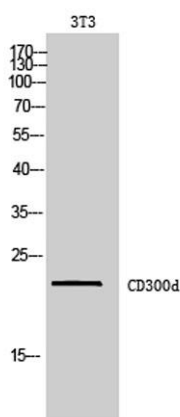
|                                 |  |
|---------------------------------|--|
| <b>Product Name</b>             | CD300d rabbit pAb  |
| <b>Host species</b>             | Rabbit   |
| <b>Applications</b>             | WB;ELISA   |
| <b>Species Cross-Reactivity</b> | Human;Rat;Mouse;   |
| <b>Recommended dilutions</b>    | Western Blot: 1/500 - 1/2000. ELISA: 1/10000. Not yet tested in other applications.  |
| <b>Immunogen</b>                | The antiserum was produced against synthesized peptide derived from the Internal region of human CD300LD. AA range:61-110                              |
| <b>Specificity</b>              | CD300d Polyclonal Antibody detects endogenous levels of CD300d protein.  |
| <b>Formulation</b>              | Liquid in PBS containing 50% glycerol, 0.5% BSA and 0.02% sodium azide..   |
| <b>Storage</b>                  | Store at -20°C. Avoid repeated freeze-thaw cycles.   |
| <b>Protein Name</b>             | CMRF35-like molecule 4   |
| <b>Gene Name</b>                | CD300LD  |
| <b>Cellular localization</b>    | Cell membrane ; Single-pass type I membrane protein . Cell surface localization requires the ITAM-bearing Fc receptor FCER1G to overcome ER retention. |
| <b>Purification</b>             | The antibody was affinity-purified from rabbit antiserum by affinity-chromatography using epitope-specific immunogen.                                  |

|                                |   |
|--------------------------------|---|
| <b>Clonality</b>               | Polyclonal  |
| <b>Concentration</b>           | 1 mg/ml   |
| <b>Observed band</b>           | 22kD  |
| <b>Human Gene ID</b>           | 100131439   |
| <b>Human Swiss-Prot Number</b> | Q6UXZ3  |
| <b>Alternative Names</b>       | CD300LD; CD300D; CMRF35A4; CMRF35-like molecule 4; CLM-4; CD300 antigen-like family member D; CMRF35-A4; CD300d |

**Background** similarity:Belongs to the CD300 family.,similarity:Contains 1 Ig-like V-type (immunoglobulin-like) domain.,



**Western Blot analysis of NIH-3T3 cells using CD300d Polyclonal Antibody. Secondary antibody(catalog#:RS0002) was diluted at 1:20000**



**Western Blot analysis of 3T3 cells using CD300d Polyclonal Antibody. Secondary antibody(catalog#:RS0002) was diluted at 1:20000**