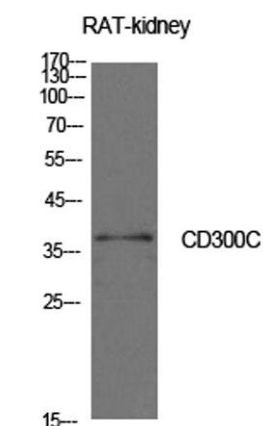


CD300c rabbit pAb**Cat#: orb767224 (Manual)**

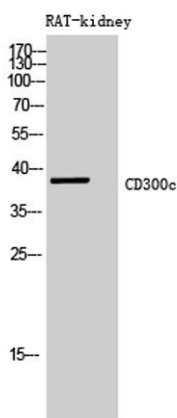
For research use only. Not intended for diagnostic use.

Product Name	CD300c rabbit pAb
Host species	Rabbit
Applications	WB;ELISA
Species Cross-Reactivity	Human;Rat;Mouse;
Recommended dilutions	Western Blot: 1/500 - 1/2000. ELISA: 1/10000. Not yet tested in other applications.
Immunogen	The antiserum was produced against synthesized peptide derived from the Internal region of human CD300C. AA range:131-180
Specificity	CD300c Polyclonal Antibody detects endogenous levels of CD300c protein.
Formulation	Liquid in PBS containing 50% glycerol, 0.5% BSA and 0.02% sodium azide..
Storage	Store at -20°C. Avoid repeated freeze-thaw cycles.
Protein Name	CMRF35-like molecule 6
Gene Name	CD300C
Cellular localization	Cell membrane ; Single-pass type I membrane protein .
Purification	The antibody was affinity-purified from rabbit antiserum by affinity-chromatography using epitope-specific immunogen.
Clonality	Polyclonal

Concentration	1 mg/ml
Observed band	37kD
Human Gene ID	10871
Human Swiss-Prot Number	Q08708
Alternative Names	CD300C; CMRF35; CMRF35A; CMRF35A1; IGSF16; CMRF35-like molecule 6; CLM-6; CD300 antigen-like family member C; CMRF35-A1; CMRF-35; Immunoglobulin superfamily member 16; IgSF16; CD300c
Background	CD300c molecule(CD300C) Homo sapiens The CMRF35 antigen, which was identified by reactivity with a monoclonal antibody, is present on monocytes, neutrophils, and some T and B lymphocytes (Jackson et al., 1992 [PubMed 1349532]).[supplied by OMIM, Mar 2008],



Western Blot analysis of rat kidney cells using CD300c Polyclonal Antibody. Antibody was diluted at 1:500. Secondary antibody(catalog#:RS0002) was diluted at 1:20000



Western Blot analysis of RAT-kidney cells using CD300c Polyclonal Antibody diluted at 1:500. Secondary antibody(catalog#:RS0002) was diluted at 1:20000