

**SOD-2 rabbit pAb****Cat#: orb767180 (Manual)**

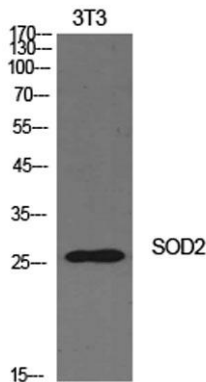
For research use only. Not intended for diagnostic use.

<b>Product Name</b>	SOD-2 rabbit pAb
<b>Host species</b>	Rabbit
<b>Applications</b>	WB;IHC;IF;ELISA
<b>Species Cross-Reactivity</b>	Human;Mouse;Rat
<b>Recommended dilutions</b>	IHC-p: 100-300. Western Blot: 1/500 - 1/2000. ELISA: 1/10000. Not yet tested in other applications.
<b>Immunogen</b>	The antiserum was produced against synthesized peptide derived from the Internal region of human SOD2. AA range:91-140
<b>Specificity</b>	SOD-2 Polyclonal Antibody detects endogenous levels of SOD-2 protein.
<b>Formulation</b>	Liquid in PBS containing 50% glycerol, 0.5% BSA and 0.02% sodium azide..
<b>Storage</b>	Store at -20°C. Avoid repeated freeze-thaw cycles.
<b>Protein Name</b>	Superoxide dismutase [Mn] mitochondrial
<b>Gene Name</b>	SOD2
<b>Cellular localization</b>	Mitochondrion matrix.
<b>Purification</b>	The antibody was affinity-purified from rabbit antiserum by affinity-chromatography using epitope-specific immunogen.
<b>Clonality</b>	Polyclonal

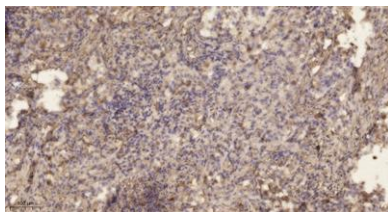
<b>Concentration</b>	1 mg/ml
<b>Observed band</b>	24kD
<b>Human Gene ID</b>	6648
<b>Human Swiss-Prot Number</b>	P04179
<b>Alternative Names</b>	SOD2; Superoxide dismutase [Mn], mitochondrial

**Background**

This gene is a member of the iron/manganese superoxide dismutase family. It encodes a mitochondrial protein that forms a homotetramer and binds one manganese ion per subunit. This protein binds to the superoxide byproducts of oxidative phosphorylation and converts them to hydrogen peroxide and diatomic oxygen. Mutations in this gene have been associated with idiopathic cardiomyopathy (IDC), premature aging, sporadic motor neuron disease, and cancer. Alternative splicing of this gene results in multiple transcript variants. A related pseudogene has been identified on chromosome 1. [provided by RefSeq, Apr 2016],



**Western Blot analysis of NIH-3T3 cells using SOD-2 Polyclonal Antibody. Secondary antibody(catalog#:RS0002) was diluted at 1:20000**



**Immunohistochemical analysis of paraffin-embedded human lung cancer. 1, Antibody was diluted at 1:200(4° overnight). 2, Tris-EDTA,pH9.0 was used for antigen retrieval. 3,Secondary antibody was diluted at 1:200(room temperature, 45min).**



Explore. Bioreagents.

[www.biorbyt.com](http://www.biorbyt.com)