

## IGFBP1 rabbit pAb

**Cat#: orb767172 (Manual)**

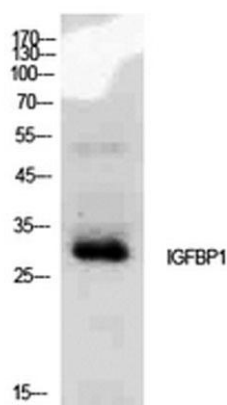
For research use only. Not intended for diagnostic use.

|                                 |  |
|---------------------------------|--|
| <b>Product Name</b>             | IGFBP1 rabbit pAb  |
| <b>Host species</b>             | Rabbit   |
| <b>Applications</b>             | WB;IHC;IF;ELISA  |
| <b>Species Cross-Reactivity</b> | Human;Rat;Mouse;   |
| <b>Recommended dilutions</b>    | Western Blot: 1/500 - 1/2000. IHC-p: 1:100-1:300. ELISA: 1/10000. Not yet tested in other applications.                  |
| <b>Immunogen</b>                | The antiserum was produced against synthesized peptide derived from the Internal region of human IGFBP1. AA range:91-140 |
| <b>Specificity</b>              | IGFBP1 Polyclonal Antibody detects endogenous levels of IGFBP1 protein.  |
| <b>Formulation</b>              | Liquid in PBS containing 50% glycerol, 0.5% BSA and 0.02% sodium azide..   |
| <b>Storage</b>                  | Store at -20°C. Avoid repeated freeze-thaw cycles.   |
| <b>Protein Name</b>             | Insulin-like growth factor-binding protein 1   |
| <b>Gene Name</b>                | IGFBP1   |
| <b>Cellular localization</b>    | Secreted.  |
| <b>Purification</b>             | The antibody was affinity-purified from rabbit antiserum by affinity-chromatography using epitope-specific immunogen.    |
| <b>Clonality</b>                | Polyclonal   |

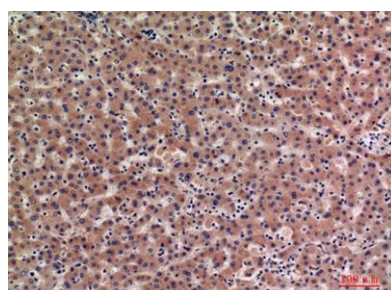
|                                |   |
|--------------------------------|---|
| <b>Concentration</b>           | 1 mg/ml   |
| <b>Observed band</b>           | 28kD  |
| <b>Human Gene ID</b>           | 3484  |
| <b>Human Swiss-Prot Number</b> | P08833  |
| <b>Alternative Names</b>       | IGFBP1; IBP1; Insulin-like growth factor-binding protein 1; IBP-1; IGF-binding protein 1; IGFBP-1; Placental protein 12; PP12 |

### Background

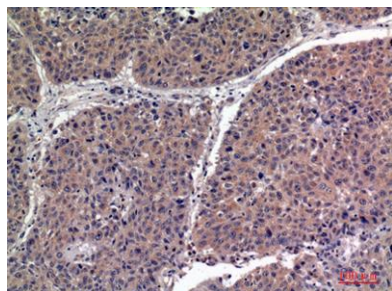
This gene is a member of the insulin-like growth factor binding protein (IGFBP) family and encodes a protein with an IGFBP domain and a thyroglobulin type-I domain. The protein binds both insulin-like growth factors (IGFs) I and II and circulates in the plasma. Binding of this protein prolongs the half-life of the IGFs and alters their interaction with cell surface receptors. [provided by RefSeq, Jul 2008],



**Western Blot analysis of MCF7 cells using IGFBP1 Polyclonal Antibody. Secondary antibody(catalog#:RS0002) was diluted at 1:20000**



**Immunohistochemical analysis of paraffin-embedded human-liver, antibody was diluted at 1:100**



**Immunohistochemical analysis of paraffin-embedded human-lung, antibody was diluted at 1:100**