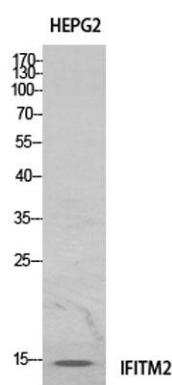


IFITM2 rabbit pAb**Cat#: orb767137 (Manual)**

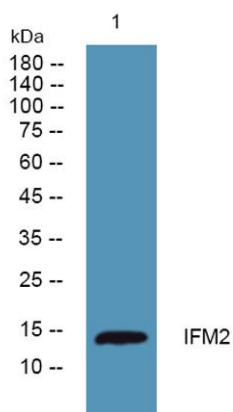
For research use only. Not intended for diagnostic use.

Product Name	IFITM2 rabbit pAb
Host species	Rabbit
Applications	WB;ELISA
Species Cross-Reactivity	Human;Rat;Mouse;
Recommended dilutions	Western Blot: 1/500 - 1/2000. ELISA: 1/20000. Not yet tested in other applications.
Immunogen	The antiserum was produced against synthesized peptide derived from the Internal region of human IFITM2. AA range:1-50
Specificity	IFITM2 Polyclonal Antibody detects endogenous levels of IFITM2 protein.
Formulation	Liquid in PBS containing 50% glycerol, 0.5% BSA and 0.02% sodium azide..
Storage	Store at -20°C. Avoid repeated freeze-thaw cycles.
Protein Name	Interferon-induced transmembrane protein 2
Gene Name	IFITM2
Cellular localization	Cell membrane ; Single-pass type II membrane protein . Lysosome membrane ; Single-pass type II membrane protein . Late endosome membrane ; Single-pass type II membrane protein .
Purification	The antibody was affinity-purified from rabbit antiserum by affinity-chromatography using epitope-specific immunogen.

Clonality	Polyclonal
Concentration	1 mg/ml
Observed band	15kD
Human Gene ID	10581
Human Swiss-Prot Number	Q01629
Alternative Names	IFITM2; Interferon-induced transmembrane protein 2; Dispanin subfamily A member 2c; DSPA2c; Interferon-inducible protein 1-8D
Background	induction:By alpha and gamma interferons.,similarity:Belongs to the CD225 family.,



Western Blot analysis of HeLa cells using IFITM2 Polyclonal Antibody. Antibody was diluted at 1:1000. Secondary antibody(catalog#:RS0002) was diluted at 1:20000



Western blot analysis of lysates from SW480 cells, primary antibody was diluted at 1:1000, 4° over night