

## MAG rabbit pAb

**Cat#: orb767122 (Manual)**

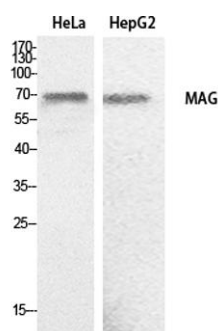
For research use only. Not intended for diagnostic use.

<b>Product Name</b>	MAG rabbit pAb
<b>Host species</b>	Rabbit
<b>Applications</b>	WB;ELISA
<b>Species Cross-Reactivity</b>	Human;Mouse;Rat
<b>Recommended dilutions</b>	Western Blot: 1/500 - 1/2000. ELISA: 1/20000. Not yet tested in other applications.
<b>Immunogen</b>	The antiserum was produced against synthesized peptide derived from the C-terminal region of human MAG. AA range:501-550
<b>Specificity</b>	MAG Polyclonal Antibody detects endogenous levels of MAG protein.
<b>Formulation</b>	Liquid in PBS containing 50% glycerol, 0.5% BSA and 0.02% sodium azide..
<b>Storage</b>	Store at -20°C. Avoid repeated freeze-thaw cycles.
<b>Protein Name</b>	Myelin-associated glycoprotein
<b>Gene Name</b>	MAG
<b>Cellular localization</b>	Cell membrane ; Single-pass type I membrane protein . Membrane raft .
<b>Purification</b>	The antibody was affinity-purified from rabbit antiserum by affinity-chromatography using epitope-specific immunogen.
<b>Clonality</b>	Polyclonal

<b>Concentration</b>	1 mg/ml
<b>Observed band</b>	70kD
<b>Human Gene ID</b>	4099
<b>Human Swiss-Prot Number</b>	P20916
<b>Alternative Names</b>	MAG; GMA; Myelin-associated glycoprotein; Siglec-4a

### Background

The protein encoded by this gene is a type I membrane protein and member of the immunoglobulin superfamily. It is thought to be involved in the process of myelination. It is a lectin that binds to sialylated glycoconjugates and mediates certain myelin-neuron cell-cell interactions. Three alternatively spliced transcripts encoding different isoforms have been described for this gene. [provided by RefSeq, Nov 2010],



**Western Blot analysis of HeLa, HepG2 cells using MAG Polyclonal Antibody. Secondary antibody(catalog#:RS0002) was diluted at 1:20000**