

**IL-1F8 rabbit pAb****Cat#: orb767117 (Manual)**

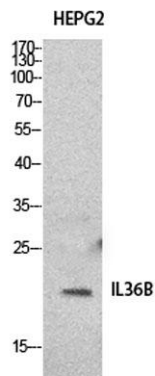
For research use only. Not intended for diagnostic use.

<b>Product Name</b>	IL-1F8 rabbit pAb
<b>Host species</b>	Rabbit
<b>Applications</b>	WB;IHC;IF;ELISA
<b>Species Cross-Reactivity</b>	Human;Rat;Mouse;
<b>Recommended dilutions</b>	Western Blot: 1/500 - 1/2000. IHC-p: 1/100-1/300. ELISA: 1/20000. Not yet tested in other applications.
<b>Immunogen</b>	The antiserum was produced against synthesized peptide derived from the C-terminal region of human IL36B. AA range:111-160
<b>Specificity</b>	IL-1F8 Polyclonal Antibody detects endogenous levels of IL-1F8 protein.
<b>Formulation</b>	Liquid in PBS containing 50% glycerol, 0.5% BSA and 0.02% sodium azide..
<b>Storage</b>	Store at -20°C. Avoid repeated freeze-thaw cycles.
<b>Protein Name</b>	Interleukin-36 beta
<b>Gene Name</b>	IL36B
<b>Cellular localization</b>	Cytoplasm . Secreted . The secretion is dependent on protein unfolding and facilitated by the cargo receptor TMED10; it results in protein translocation from the cytoplasm into the ERGIC (endoplasmic reticulum-Golgi intermediate compartment) followed by vesicle entry and secretion. .
<b>Purification</b>	The antibody was affinity-purified from rabbit antiserum by affinity-chromatography using epitope-specific immunogen.

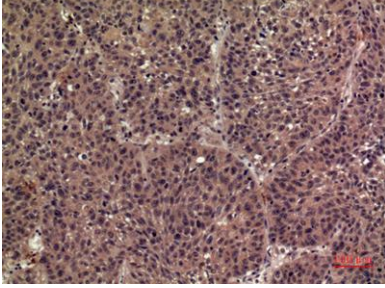
<b>Clonality</b>	Polyclonal
<b>Concentration</b>	1 mg/ml
<b>Observed band</b>	19kD
<b>Human Gene ID</b>	27177
<b>Human Swiss-Prot Number</b>	Q9NZH7
<b>Alternative Names</b>	IL36B; IL1F8; IL1H2; Interleukin-36 beta; FIL1 eta; Interleukin-1 eta; IL-1 eta; Interleukin-1 family member 8; IL-1F8; Interleukin-1 homolog 2; IL-1H2

**Background**

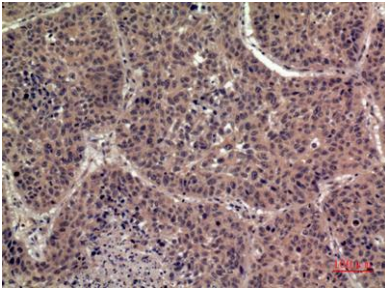
The protein encoded by this gene is a member of the interleukin 1 cytokine family. Protein structure modeling indicated that this cytokine may contain a 12-stranded beta-trefoil structure that is conserved between IL1A (IL-1 alpha) and IL1B (IL-1 beta). This gene and eight other interleukin 1 family genes form a cytokine gene cluster on chromosome 2. Two alternatively spliced transcript variants encoding distinct isoforms have been reported. [provided by RefSeq, Jul 2008],



**Western Blot analysis of HepG2 cells using IL-1F8 Polyclonal Antibody. Secondary antibody(catalog#:RS0002) was diluted at 1:20000**



**Immunohistochemical analysis of paraffin-embedded human-lung, antibody was diluted at 1:100**



**Immunohistochemical analysis of paraffin-embedded human-lung, antibody was diluted at 1:100**