

**SAMHD1 rabbit pAb****Cat#: orb767096 (Manual)**

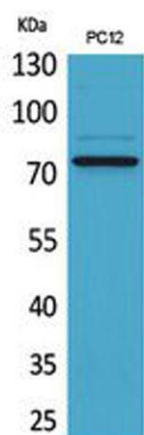
For research use only. Not intended for diagnostic use.

<b>Product Name</b>	SAMHD1 rabbit pAb
<b>Host species</b>	Rabbit
<b>Applications</b>	WB;IHC;IF;ELISA
<b>Species Cross-Reactivity</b>	Human;Rat;Mouse;
<b>Recommended dilutions</b>	Western Blot: 1/500 - 1/2000. IHC-p: 1/100-1/300. ELISA: 1/20000. Not yet tested in other applications.
<b>Immunogen</b>	The antiserum was produced against synthesized peptide derived from the Internal region of human SAMHD1. AA range:431-480
<b>Specificity</b>	SAMHD1 Polyclonal Antibody detects endogenous levels of SAMHD1 protein.
<b>Formulation</b>	Liquid in PBS containing 50% glycerol, 0.5% BSA and 0.02% sodium azide..
<b>Storage</b>	Store at -20°C. Avoid repeated freeze-thaw cycles.
<b>Protein Name</b>	SAM domain and HD domain-containing protein 1
<b>Gene Name</b>	SAMHD1
<b>Cellular localization</b>	Nucleus . Chromosome . Localizes to sites of DNA double-strand breaks in response to DNA damage. .
<b>Purification</b>	The antibody was affinity-purified from rabbit antiserum by affinity-chromatography using epitope-specific immunogen.
<b>Clonality</b>	Polyclonal

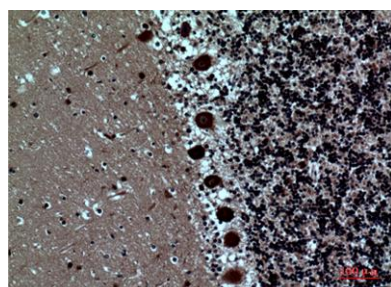
<b>Concentration</b>	1 mg/ml
<b>Observed band</b>	72kD
<b>Human Gene ID</b>	25939
<b>Human Swiss-Prot Number</b>	Q9Y3Z3
<b>Alternative Names</b>	SAMHD1; MOP5; SAM domain and HD domain-containing protein 1; Dendritic cell-derived IFNG-induced protein; DCIP; Monocyte protein 5; MOP-5

#### Background

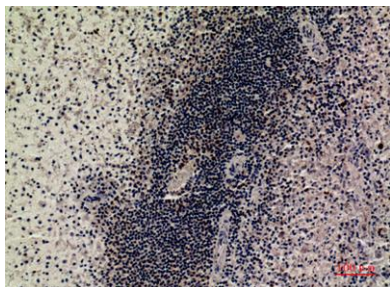
SAM and HD domain containing deoxynucleoside triphosphate triphosphohydrolase 1(SAMHD1) Homo sapiens This gene may play a role in regulation of the innate immune response. The encoded protein is upregulated in response to viral infection and may be involved in mediation of tumor necrosis factor-alpha proinflammatory responses. Mutations in this gene have been associated with Aicardi-Goutieres syndrome. [provided by RefSeq, Mar 2010],



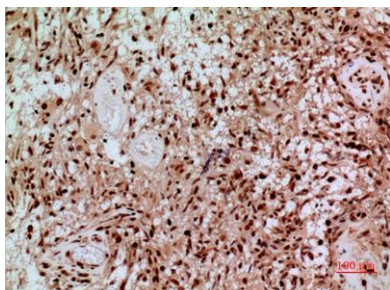
Western Blot analysis of PC12 cells using SAMHD1 Polyclonal Antibody. Secondary antibody(catalog#:RS0002) was diluted at 1:20000 cells nucleus extracted by Minute TM Cytoplasmic and Nuclear Fractionation kit (SC-003, Invent biotech, MN, USA).



Immunohistochemical analysis of paraffin-embedded human-brain, antibody was diluted at 1:100



**Immunohistochemical analysis of paraffin-embedded human-spleen, antibody was diluted at 1:100**



**Immunohistochemical analysis of paraffin-embedded human-brain, antibody was diluted at 1:100**