

## POLR3G rabbit pAb

**Cat#: orb767094 (Manual)**

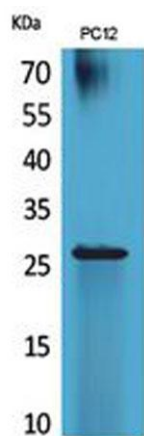
For research use only. Not intended for diagnostic use.

<b>Product Name</b>	POLR3G rabbit pAb
<b>Host species</b>	Rabbit
<b>Applications</b>	WB;IHC;IF;ELISA
<b>Species Cross-Reactivity</b>	Human;Mouse
<b>Recommended dilutions</b>	Western Blot: 1/500 - 1/2000. IHC-p: 1/100-1/300. ELISA: 1/20000. Not yet tested in other applications.
<b>Immunogen</b>	The antiserum was produced against synthesized peptide derived from the Internal region of human POLR3G. AA range:151-200
<b>Specificity</b>	POLR3G Polyclonal Antibody detects endogenous levels of POLR3G protein.
<b>Formulation</b>	Liquid in PBS containing 50% glycerol, 0.5% BSA and 0.02% sodium azide..
<b>Storage</b>	Store at -20°C. Avoid repeated freeze-thaw cycles.
<b>Protein Name</b>	DNA-directed RNA polymerase III subunit RPC7
<b>Gene Name</b>	POLR3G
<b>Cellular localization</b>	Nucleus . Cytoplasm . Excluded from nucleoli (PubMed:21898682). In zygotes and the 2-cell stage embryos, mainly in the cytoplasm. Starts to localize to the nucleus in the 8-16 cell stage embryo and early blastocysts (By similarity). .
<b>Purification</b>	The antibody was affinity-purified from rabbit antiserum by affinity-chromatography using epitope-specific immunogen.

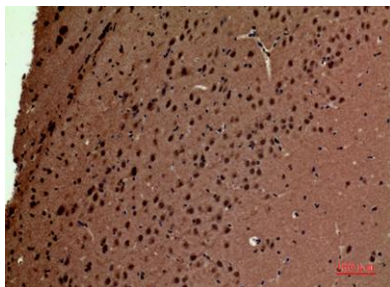
<b>Clonality</b>	Polyclonal
<b>Concentration</b>	1 mg/ml
<b>Observed band</b>	26kD
<b>Human Gene ID</b>	10622
<b>Human Swiss-Prot Number</b>	O15318
<b>Alternative Names</b>	POLR3G; DNA-directed RNA polymerase III subunit RPC7; RNA polymerase III subunit C7; DNA-directed RNA polymerase III subunit G; RNA polymerase III 32 kDa subunit; RPC32

### Background

function:DNA-dependent RNA polymerase catalyzes the transcription of DNA into RNA using the four ribonucleoside triphosphates as substrates. Specific peripheric component of RNA polymerase III which synthesizes small RNAs, such as 5S rRNA and tRNAs. May direct with other members of the RPC3/POLR3C-RPC6/POLR3F-RPC7/POLR3G subcomplex RNA Pol III binding to the TFIIB-DNA complex via the interactions between TFIIB and POLR3F. May be involved either in the recruitment and stabilization of the subcomplex within RNA polymerase III, or in stimulating catalytic functions of other subunits during initiation.,similarity:Belongs to the eukaryotic RPC7 RNA polymerase subunit family.,subunit:Component of the RNA polymerase III (Pol III) complex consisting of 17 subunits (By similarity). RPC3/POLR3C, RPC6/POLR3F and RPC7/POLR3G form a Pol III subcomplex.,



Western Blot analysis of PC12 cells using POLR3G Polyclonal Antibody. Secondary antibody(catalog#:RS0002) was diluted at 1:20000 cells nucleus extracted by Minute TM Cytoplasmic and Nuclear Fractionation kit (SC-003,Inventbiotech,MN,USA).



**Immunohistochemical analysis of paraffin-embedded mouse-brain, antibody was diluted at 1:100**



**Immunohistochemical analysis of paraffin-embedded mouse-brain, antibody was diluted at 1:100**