

HRP-3 rabbit pAb

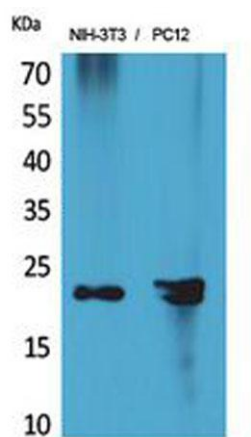
Cat#: orb767089 (Manual)

For research use only. Not intended for diagnostic use.

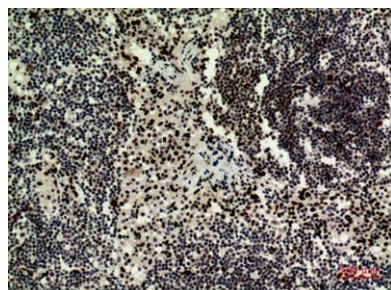
Product Name	HRP-3 rabbit pAb
Host species	Rabbit
Applications	WB;IHC;IF;ELISA
Species Cross-Reactivity	Human;Mouse;Rat
Recommended dilutions	Western Blot: 1/500 - 1/2000. IHC-p: 1/100-1/300. ELISA: 1/20000. Not yet tested in other applications.
Immunogen	The antiserum was produced against synthesized peptide derived from the Internal region of human HDGFRP3. AA range:131-180
Specificity	HRP-3 Polyclonal Antibody detects endogenous levels of HRP-3 protein.
Formulation	Liquid in PBS containing 50% glycerol, 0.5% BSA and 0.02% sodium azide..
Storage	Store at -20°C. Avoid repeated freeze-thaw cycles.
Protein Name	Hepatoma-derived growth factor-related protein 3
Gene Name	HDGFRP3
Cellular localization	Nucleus .
Purification	The antibody was affinity-purified from rabbit antiserum by affinity-chromatography using epitope-specific immunogen.
Clonality	Polyclonal

Concentration	1 mg/ml
Observed band	23kD
Human Gene ID	50810
Human Swiss-Prot Number	Q9Y3E1
Alternative Names	HDGFRP3; HDGF2; CGI-142; Hepatoma-derived growth factor-related protein 3; HRP-3; Hepatoma-derived growth factor 2; HDGF-2

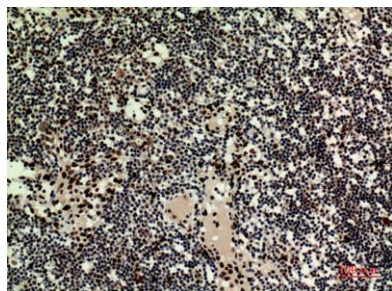
Background function:Enhances DNA synthesis and may play a role in cell proliferation.,similarity:Belongs to the HDGF family.,similarity:Contains 1 PWWP domain.,tissue specificity:Detected in testis, heart, spinal cord and brain.,



Western Blot analysis of NIH-3T3, PC12 cells using HRP-3 Polyclonal Antibody. Secondary antibody(catalog#:RS0002) was diluted at 1:20000



Immunohistochemical analysis of paraffin-embedded human-Lymph-nodes, antibody was diluted at 1:100



Immunohistochemical analysis of paraffin-embedded human-Lymph-nodes, antibody was diluted at 1:100