

**PRX I rabbit pAb****Cat#: orb767060 (Manual)**

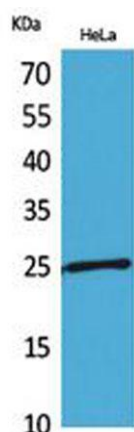
For research use only. Not intended for diagnostic use.

<b>Product Name</b>	PRX I rabbit pAb
<b>Host species</b>	Rabbit
<b>Applications</b>	WB;IHC;IF;ELISA
<b>Species Cross-Reactivity</b>	Human;Mouse;Rat
<b>Recommended dilutions</b>	Western Blot: 1/500 - 1/2000. IHC-p: 1/100-1/300. ELISA: 1/20000. Not yet tested in other applications.
<b>Immunogen</b>	The antiserum was produced against synthesized peptide derived from the Internal region of human PRDX1. AA range:31-80
<b>Specificity</b>	PRX I Polyclonal Antibody detects endogenous levels of PRX I protein.
<b>Formulation</b>	Liquid in PBS containing 50% glycerol, 0.5% BSA and 0.02% sodium azide..
<b>Storage</b>	Store at -20°C. Avoid repeated freeze-thaw cycles.
<b>Protein Name</b>	Peroxiredoxin-1
<b>Gene Name</b>	PRDX1
<b>Cellular localization</b>	Cytoplasm . Melanosome . Identified by mass spectrometry in melanosome fractions from stage I to stage IV.
<b>Purification</b>	The antibody was affinity-purified from rabbit antiserum by affinity-chromatography using epitope-specific immunogen.
<b>Clonality</b>	Polyclonal

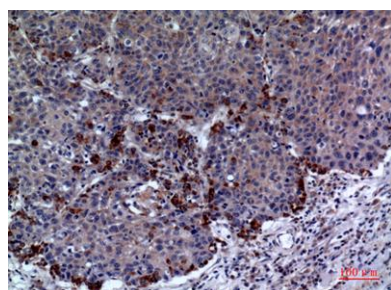
<b>Concentration</b>	1 mg/ml
<b>Observed band</b>	21kD
<b>Human Gene ID</b>	5052
<b>Human Swiss-Prot Number</b>	Q06830
<b>Alternative Names</b>	PRDX1; PAGA; PAGB; TDPX2; Peroxiredoxin-1; Natural killer cell-enhancing factor A; NKEF-A; Proliferation-associated gene protein; PAG; Thioredoxin peroxidase 2; Thioredoxin-dependent peroxide reductase 2

### Background

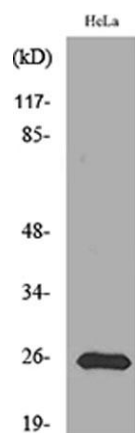
This gene encodes a member of the peroxiredoxin family of antioxidant enzymes, which reduce hydrogen peroxide and alkyl hydroperoxides. The encoded protein may play an antioxidant protective role in cells, and may contribute to the antiviral activity of CD8(+) T-cells. This protein may have a proliferative effect and play a role in cancer development or progression. Four transcript variants encoding the same protein have been identified for this gene. [provided by RefSeq, Jan 2011],



**Western Blot analysis of HeLa cells using PRX I Polyclonal Antibody. Secondary antibody(catalog#:RS0002) was diluted at 1:20000**



**Immunohistochemical analysis of paraffin-embedded human-lung, antibody was diluted at 1:100**



Western blot analysis of lysate from HeLa cells, using PRDX1 Antibody.