

**FOXP3 rabbit pAb****Cat#: orb767051 (Manual)**

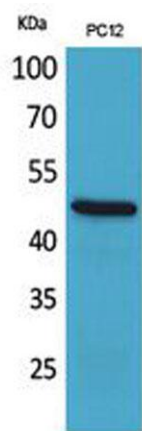
For research use only. Not intended for diagnostic use.

<b>Product Name</b>	FOXP3 rabbit pAb
<b>Host species</b>	Rabbit
<b>Applications</b>	WB;IHC;IF;ELISA
<b>Species Cross-Reactivity</b>	Human;Mouse;Rat;Pig
<b>Recommended dilutions</b>	Western Blot: 1/500 - 1/2000. IHC-p: 1/100-1/300. ELISA: 1/20000. Not yet tested in other applications.
<b>Immunogen</b>	The antiserum was produced against synthesized peptide derived from the C-terminal region of human FOXP3. AA range:381-430
<b>Specificity</b>	FOXP3 Polyclonal Antibody detects endogenous levels of FOXP3 protein.
<b>Formulation</b>	Liquid in PBS containing 50% glycerol, 0.5% BSA and 0.02% sodium azide..
<b>Storage</b>	Store at -20°C. Avoid repeated freeze-thaw cycles.
<b>Protein Name</b>	Forkhead box protein P3
<b>Gene Name</b>	FOXP3
<b>Cellular localization</b>	Nucleus . Cytoplasm . Predominantly expressed in the cytoplasm in activated conventional T-cells whereas predominantly expressed in the nucleus in regulatory T-cells (Treg). The 41 kDa form derived by proteolytic processing is found exclusively in the chromatin fraction of activated Treg cells (By similarity). .
<b>Purification</b>	The antibody was affinity-purified from rabbit antiserum by affinity-chromatography using epitope-specific immunogen.

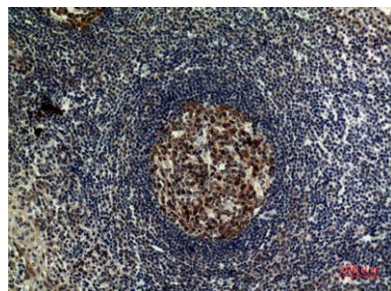
<b>Clonality</b>	Polyclonal
<b>Concentration</b>	1 mg/ml
<b>Observed band</b>	47kD
<b>Human Gene ID</b>	50943
<b>Human Swiss-Prot Number</b>	Q9BZS1
<b>Alternative Names</b>	FOXP3; IPEX; JM2; Forkhead box protein P3; Scurfin

### Background

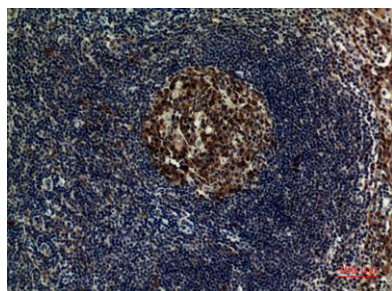
The protein encoded by this gene is a member of the forkhead/winged-helix family of transcriptional regulators. Defects in this gene are the cause of immunodeficiency polyendocrinopathy, enteropathy, X-linked syndrome (IPEX), also known as X-linked autoimmunity-immunodeficiency syndrome. Alternatively spliced transcript variants encoding different isoforms have been identified. [provided by RefSeq, Jul 2008],



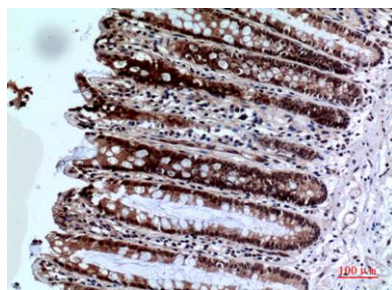
**Western Blot analysis of PC12 cells using FOXP3 Polyclonal Antibody. Secondary antibody(catalog#:RS0002) was diluted at 1:20000**



**Immunohistochemical analysis of paraffin-embedded human-tonsilla, antibody was diluted at 1:100**



**Immunohistochemical analysis of paraffin-embedded human-tonsilla, antibody was diluted at 1:100**



**Immunohistochemical analysis of paraffin-embedded human-colon, antibody was diluted at 1:100**