

## MAPK Organizer 1 rabbit pAb

**Cat#: orb767050 (Manual)**

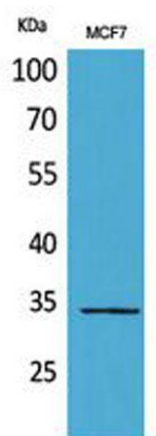
For research use only. Not intended for diagnostic use.

<b>Product Name</b>	MAPK Organizer 1 rabbit pAb
<b>Host species</b>	Rabbit
<b>Applications</b>	WB;IHC;IF;ELISA
<b>Species Cross-Reactivity</b>	Human;Mouse;Rat
<b>Recommended dilutions</b>	Western Blot: 1/500 - 1/2000. IHC-p: 1/100-1/300. ELISA: 1/20000. Not yet tested in other applications.
<b>Immunogen</b>	The antiserum was produced against synthesized peptide derived from the Internal region of human WDR83. AA range:141-190
<b>Specificity</b>	MAPK Organizer 1 Polyclonal Antibody detects endogenous levels of MAPK Organizer 1 protein.
<b>Formulation</b>	Liquid in PBS containing 50% glycerol, 0.5% BSA and 0.02% sodium azide..
<b>Storage</b>	Store at -20°C. Avoid repeated freeze-thaw cycles.
<b>Protein Name</b>	WD repeat domain-containing protein 83
<b>Gene Name</b>	WDR83
<b>Cellular localization</b>	Cytoplasm . Nucleus . Predominantly cytoplasmic. Partially nuclear. .
<b>Purification</b>	The antibody was affinity-purified from rabbit antiserum by affinity-chromatography using epitope-specific immunogen.
<b>Clonality</b>	Polyclonal

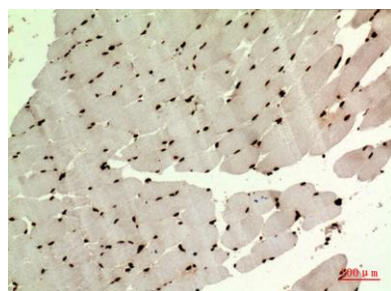
<b>Concentration</b>	1 mg/ml
<b>Observed band</b>	34kD
<b>Human Gene ID</b>	84292
<b>Human Swiss-Prot Number</b>	Q9BRX9
<b>Alternative Names</b>	WDR83; MORG1; WD repeat domain-containing protein 83; Mitogen-activated protein kinase organizer 1; MAPK organizer 1

### Background

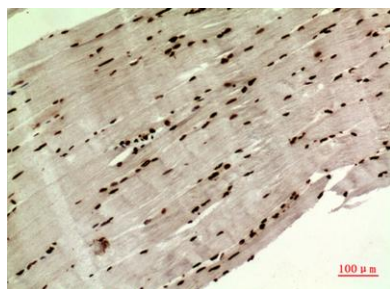
This gene encodes a member of the WD-40 protein family. The protein is proposed to function as a molecular scaffold for various multimeric protein complexes. The protein associates with several components of the extracellular signal-regulated kinase (ERK) pathway, and promotes ERK activity in response to serum or other signals. The protein also interacts with egl nine homolog 3 (EGLN3, also known as PHD3) and regulates expression of hypoxia-inducible factor 1, and has been purified as part of the spliceosome. Alternative splicing results in multiple transcript variants. [provided by RefSeq, Oct 2009],



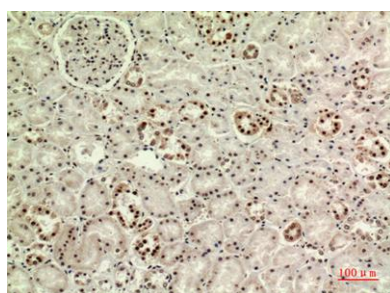
**Western Blot analysis of MCF7 cells using MAPK Organizer 1 Polyclonal Antibody. Secondary antibody(catalog#:RS0002) was diluted at 1:20000**



**Immunohistochemical analysis of paraffin-embedded human-muscle, antibody was diluted at 1:100**



**Immunohistochemical analysis of paraffin-embedded human-muscle, antibody was diluted at 1:100**



**Immunohistochemical analysis of paraffin-embedded human-kidney, antibody was diluted at 1:100**