

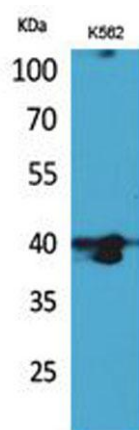
**GPR87/95 rabbit pAb****Cat#: orb767043 (Manual)**

For research use only. Not intended for diagnostic use.

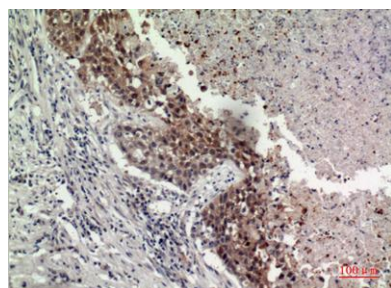
<b>Product Name</b>	GPR87/95 rabbit pAb
<b>Host species</b>	Rabbit
<b>Applications</b>	WB;IHC;IF;ELISA
<b>Species Cross-Reactivity</b>	Human;Rat;Mouse;
<b>Recommended dilutions</b>	Western Blot: 1/500 - 1/2000. IHC-p: 1/100-1/300. ELISA: 1/20000. Not yet tested in other applications.
<b>Immunogen</b>	The antiserum was produced against synthesized peptide derived from the N-terminal region of human GPR87. AA range:1-50
<b>Specificity</b>	GPR87/95 Polyclonal Antibody detects endogenous levels of GPR87/95 protein.
<b>Formulation</b>	Liquid in PBS containing 50% glycerol, 0.5% BSA and 0.02% sodium azide..
<b>Storage</b>	Store at -20°C. Avoid repeated freeze-thaw cycles.
<b>Protein Name</b>	G-protein coupled receptor 87
<b>Gene Name</b>	GPR87
<b>Cellular localization</b>	Cell membrane ; Multi-pass membrane protein .
<b>Purification</b>	The antibody was affinity-purified from rabbit antiserum by affinity-chromatography using epitope-specific immunogen.
<b>Clonality</b>	Polyclonal

<b>Concentration</b>	1 mg/ml
<b>Observed band</b>	42kD
<b>Human Gene ID</b>	53836
<b>Human Swiss-Prot Number</b>	Q9BY21
<b>Alternative Names</b>	GPR87; GPR95; FKSG78; G-protein coupled receptor 87; G-protein coupled receptor 95

**Background** This gene encodes a G protein-coupled receptor and is located in a cluster of G protein-couple receptor genes on chromosome 3. The encoded protein has been shown to be overexpressed in lung squamous cell carcinoma (PMID:18057535) and regulated by p53 (PMID:19602589). [provided by RefSeq, Nov 2011],



**Western Blot analysis of K562 cells using GPR87/95 Polyclonal Antibody. Secondary antibody(catalog#:RS0002) was diluted at 1:20000**



**Immunohistochemical analysis of paraffin-embedded human-lung, antibody was diluted at 1:100**