

EKLF rabbit pAb**Cat#: orb767030 (Manual)**

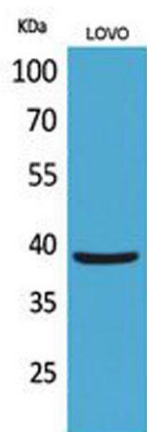
For research use only. Not intended for diagnostic use.

Product Name	EKLF rabbit pAb
Host species	Rabbit
Applications	WB;ELISA
Species Cross-Reactivity	Human;Rat;Mouse;
Recommended dilutions	Western Blot: 1/500 - 1/2000. ELISA: 1/20000. Not yet tested in other applications.
Immunogen	The antiserum was produced against synthesized peptide derived from human KLF1 around the non-acetylation site of Lys274. AA range:231-280
Specificity	EKLF Polyclonal Antibody detects endogenous levels of EKLF protein only when acetylation at K274.
Formulation	Liquid in PBS containing 50% glycerol, 0.5% BSA and 0.02% sodium azide..
Storage	Store at -20°C. Avoid repeated freeze-thaw cycles.
Protein Name	Krueppel-like factor 1
Gene Name	KLF1
Cellular localization	Nucleus . Colocalizes with SUMO1 in nuclear speckles. .
Purification	The antibody was affinity-purified from rabbit antiserum by affinity-chromatography using epitope-specific immunogen.
Clonality	Polyclonal

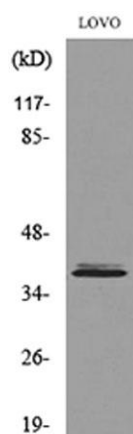
Concentration	1 mg/ml
Observed band	38kD
Human Gene ID	10661
Human Swiss-Prot Number	Q13351
Alternative Names	KLF1; EKLF; Krueppel-like factor 1; Erythroid krueppel-like transcription factor; EKLF

Background

This gene encodes a hematopoietic-specific transcription factor that induces high-level expression of adult beta-globin and other erythroid genes. The zinc-finger protein binds to the DNA sequence CCACACCCT found in the beta hemoglobin promoter. Heterozygous loss-of-function mutations in this gene result in the dominant In(Lu) blood phenotype. [provided by RefSeq, Oct 2009],



Western Blot analysis of LOVO cells using EKLF Polyclonal Antibody. Secondary antibody(catalog#:RS0002) was diluted at 1:20000 cells nucleus extracted by MinuteTM Cytoplasmic and Nuclear Fractionation kit (SC-003, Invent biotech, MN, USA).



Western blot analysis of lysate from LOVO cells, using KLF1 Antibody.