

DRA rabbit pAb**Cat#: orb767022 (Manual)**

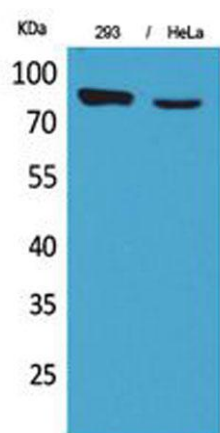
For research use only. Not intended for diagnostic use.

Product Name	DRA rabbit pAb
Host species	Rabbit
Applications	WB;ELISA
Species Cross-Reactivity	Human;Mouse;Rat
Recommended dilutions	Western Blot: 1/500 - 1/2000. ELISA: 1/20000. Not yet tested in other applications.
Immunogen	Synthesized peptide derived from the C-terminal region of human DRA.
Specificity	DRA Polyclonal Antibody detects endogenous levels of DRA protein.
Formulation	Liquid in PBS containing 50% glycerol, 0.5% BSA and 0.02% sodium azide..
Storage	Store at -20°C. Avoid repeated freeze-thaw cycles.
Protein Name	Chloride anion exchanger
Gene Name	SLC26A3
Cellular localization	Apical cell membrane ; Multi-pass membrane protein . Membrane ; Multi-pass membrane protein . Localized in sperm membranes. Midpiece of sperm tail. Colocalizes with CFTR at the midpiece of sperm tail (By similarity). .
Purification	The antibody was affinity-purified from rabbit antiserum by affinity-chromatography using epitope-specific immunogen.

Clonality	Polyclonal
Concentration	1 mg/ml
Observed band	84kD
Human Gene ID	1811
Human Swiss-Prot Number	P40879
Alternative Names	SLC26A3; DRA; Chloride anion exchanger; Down-regulated in adenoma; Protein DRA; Solute carrier family 26 member 3

Background

The protein encoded by this gene is a transmembrane glycoprotein that transports chloride ions across the cell membrane in exchange for bicarbonate ions. It is localized to the mucosa of the lower intestinal tract, particularly to the apical membrane of columnar epithelium and some goblet cells. The protein is essential for intestinal chloride absorption, and mutations in this gene have been associated with congenital chloride diarrhea. [provided by RefSeq, Oct 2008],



Western Blot analysis of 293, HeLa cells using DRA Polyclonal Antibody. Secondary antibody(catalog#:RS0002) was diluted at 1:20000