

**IFN- $\omega$  rabbit pAb****Cat#: orb767020 (Manual)**

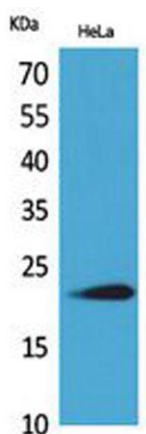
For research use only. Not intended for diagnostic use.

<b>Product Name</b>	IFN- $\omega$ rabbit pAb
<b>Host species</b>	Rabbit
<b>Applications</b>	WB;IHC;IF;ELISA
<b>Species Cross-Reactivity</b>	Human;Rat;Mouse;
<b>Recommended dilutions</b>	Western Blot: 1/500 - 1/2000. IHC-p: 1/100-1/300. ELISA: 1/20000. Not yet tested in other applications.
<b>Immunogen</b>	The antiserum was produced against synthesized peptide derived from the C-terminal region of human IFNW1. AA range:146-195
<b>Specificity</b>	IFN- $\omega$ Polyclonal Antibody detects endogenous levels of IFN- $\omega$ protein.
<b>Formulation</b>	Liquid in PBS containing 50% glycerol, 0.5% BSA and 0.02% sodium azide..
<b>Storage</b>	Store at -20°C. Avoid repeated freeze-thaw cycles.
<b>Protein Name</b>	Interferon omega-1
<b>Gene Name</b>	IFNW1
<b>Cellular localization</b>	Secreted.
<b>Purification</b>	The antibody was affinity-purified from rabbit antiserum by affinity-chromatography using epitope-specific immunogen.
<b>Clonality</b>	Polyclonal

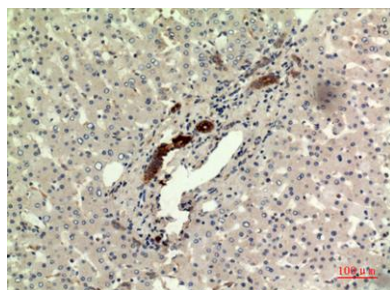
<b>Concentration</b>	1 mg/ml
<b>Observed band</b>	22kD
<b>Human Gene ID</b>	3467
<b>Human Swiss-Prot Number</b>	P05000
<b>Alternative Names</b>	IFNW1; Interferon omega-1; Interferon alpha-II-1

#### Background

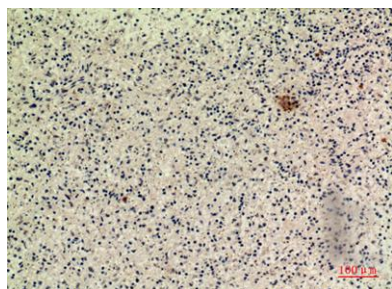
The protein encoded by this gene is an interferon and possesses antiviral activity. The encoded protein binds to the interferon alpha/beta receptor but not to the interferon gamma receptor. This intronless gene has several pseudogenes spread throughout the genome. [provided by RefSeq, Nov 2015],



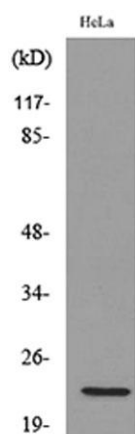
**Western Blot analysis of HeLa cells using IFN- $\omega$  Polyclonal Antibody. Secondary antibody(catalog#:RS0002) was diluted at 1:20000**



**Immunohistochemical analysis of paraffin-embedded human-liver, antibody was diluted at 1:100**



**Immunohistochemical analysis of paraffin-embedded human-spleen, antibody was diluted at 1:100**



**Western blot analysis of lysate from HeLa cells, using IFNW1 Antibody.**