

Cerberus rabbit pAb

Cat#: orb767015 (Manual)

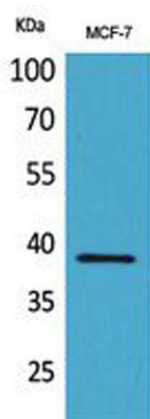
For research use only. Not intended for diagnostic use.

| | |
|---------------------------------|--|
| Product Name | Cerberus rabbit pAb |
| Host species | Rabbit |
| Applications | WB;IHC;IF;ELISA |
| Species Cross-Reactivity | Human;Rat |
| Recommended dilutions | Western Blot: 1/500 - 1/2000. IHC-p: 1/100-1/300. ELISA: 1/20000. Not yet tested in other applications. |
| Immunogen | The antiserum was produced against synthesized peptide derived from the Internal region of human CER1. AA range:91-140 |
| Specificity | Cerberus Polyclonal Antibody detects endogenous levels of Cerberus protein. |
| Formulation | Liquid in PBS containing 50% glycerol, 0.5% BSA and 0.02% sodium azide.. |
| Storage | Store at -20°C. Avoid repeated freeze-thaw cycles. |
| Protein Name | Cerberus |
| Gene Name | CER1 |
| Cellular localization | Secreted . |
| Purification | The antibody was affinity-purified from rabbit antiserum by affinity-chromatography using epitope-specific immunogen. |
| Clonality | Polyclonal |

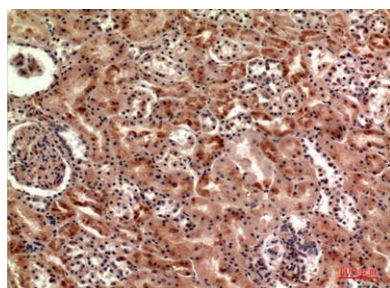
| | |
|--------------------------------|---|
| Concentration | 1 mg/ml |
| Observed band | 30kD |
| Human Gene ID | 9350 |
| Human Swiss-Prot Number | O95813 |
| Alternative Names | CER1; DAND4; Cerberus; Cerberus-related protein; DAN domain family member 4 |

Background

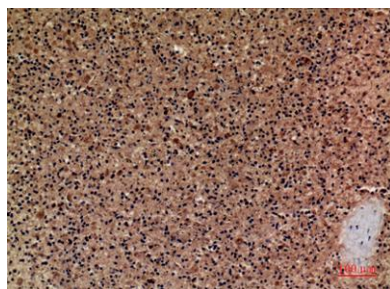
This gene encodes a cytokine member of the cysteine knot superfamily, characterized by nine conserved cysteines and a cysteine knot region. The cerberus-related cytokines, together with Dan and DRM/Gremlin, represent a group of bone morphogenetic protein (BMP) antagonists that can bind directly to BMPs and inhibit their activity. [provided by RefSeq, Jul 2008],



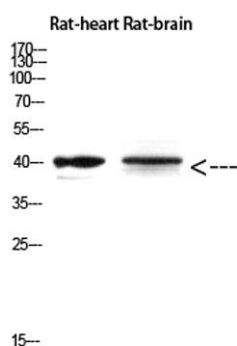
Western Blot analysis of MCF-7 cells using Cerberus Polyclonal Antibody. Antibody was diluted at 1:500. Secondary antibody(catalog#:RS0002) was diluted at 1:20000



Immunohistochemical analysis of paraffin-embedded human-kidney, antibody was diluted at 1:100



Immunohistochemical analysis of paraffin-embedded human-spleen, antibody was diluted at 1:100



Western Blot analysis of Rat-heart Rat-brain using Cerberus Polyclonal Antibody diluted at 1:500. Secondary antibody(catalog#:RS0002) was diluted at 1:20000