

CRBP II rabbit pAb

Cat#: orb766992 (Manual)

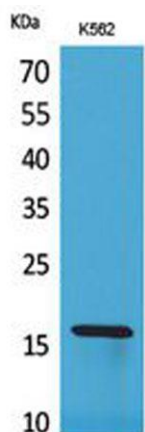
For research use only. Not intended for diagnostic use.

Product Name	CRBP II rabbit pAb
Host species	Rabbit
Applications	WB;ELISA
Species Cross-Reactivity	Human;Mouse;Rat
Recommended dilutions	Western Blot: 1/500 - 1/2000. ELISA: 1/20000. Not yet tested in other applications.
Immunogen	The antiserum was produced against synthesized peptide derived from the Internal region of human RBP2. AA range:71-120
Specificity	CRBP II Polyclonal Antibody detects endogenous levels of CRBP II protein.
Formulation	Liquid in PBS containing 50% glycerol, 0.5% BSA and 0.02% sodium azide..
Storage	Store at -20°C. Avoid repeated freeze-thaw cycles.
Protein Name	Retinol-binding protein 2
Gene Name	RBP2
Cellular localization	Cytoplasm.
Purification	The antibody was affinity-purified from rabbit antiserum by affinity-chromatography using epitope-specific immunogen.
Clonality	Polyclonal

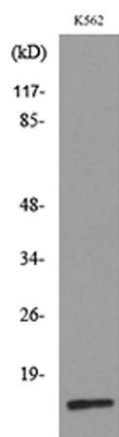
Concentration	1 mg/ml
Observed band	15kD
Human Gene ID	5948
Human Swiss-Prot Number	P50120
Alternative Names	RBP2; CRBP2; Retinol-binding protein 2; Cellular retinol-binding protein II; CRBP-II

Background

retinol binding protein 2(RBP2) Homo sapiens This gene encodes an abundant protein present in the small intestinal epithelium. It is thought to participate in the uptake and/or intracellular metabolism of vitamin A. Vitamin A is a fat-soluble vitamin necessary for growth, reproduction, differentiation of epithelial tissues, and vision. This protein may also modulate the supply of retinoic acid to the nuclei of endometrial cells during the menstrual cycle. [provided by RefSeq, Aug 2015],



Western Blot analysis of K562 cells using CRBP II Polyclonal Antibody. Secondary antibody(catalog#:RS0002) was diluted at 1:20000



Western blot analysis of lysate from K562 cells, using RBP2 Antibody.



Explore. Bioreagents.

www.biorbyt.com