

IL-2R γ rabbit pAb**Cat#: orb766985 (Manual)**

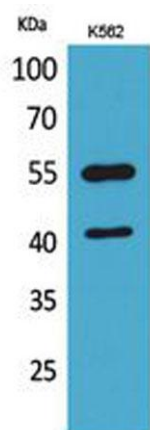
For research use only. Not intended for diagnostic use.

Product Name	IL-2R γ rabbit pAb
Host species	Rabbit
Applications	WB;ELISA
Species Cross-Reactivity	Human;Rat;Mouse;
Recommended dilutions	Western Blot: 1/500 - 1/2000. ELISA: 1/20000. Not yet tested in other applications.
Immunogen	The antiserum was produced against synthesized peptide derived from the Internal region of human IL2RG. AA range:101-150
Specificity	IL-2R γ Polyclonal Antibody detects endogenous levels of IL-2R γ protein.
Formulation	Liquid in PBS containing 50% glycerol, 0.5% BSA and 0.02% sodium azide..
Storage	Store at -20°C. Avoid repeated freeze-thaw cycles.
Protein Name	Cytokine receptor common subunit gamma
Gene Name	IL2RG
Cellular localization	Cell membrane ; Single-pass type I membrane protein . Cell surface .
Purification	The antibody was affinity-purified from rabbit antiserum by affinity-chromatography using epitope-specific immunogen.
Clonality	Polyclonal

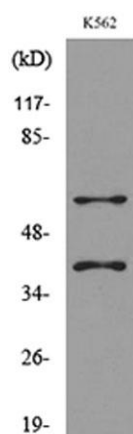
Concentration	1 mg/ml
Observed band	40kD
Human Gene ID	3561
Human Swiss-Prot Number	P31785
Alternative Names	IL2RG; Cytokine receptor common subunit gamma; Interleukin-2 receptor subunit gamma; IL-2 receptor subunit gamma; IL-2R subunit gamma; IL-2RG; gammaC; p64; CD132

Background

The protein encoded by this gene is an important signaling component of many interleukin receptors, including those of interleukin -2, -4, -7 and -21, and is thus referred to as the common gamma chain. Mutations in this gene cause X-linked severe combined immunodeficiency (XSCID), as well as X-linked combined immunodeficiency (XCID), a less severe immunodeficiency disorder. [provided by RefSeq, Mar 2010],



Western Blot analysis of K562 cells using IL-2R γ Polyclonal Antibody. Secondary antibody(catalog#:RS0002) was diluted at 1:20000



Western blot analysis of lysate from K562 cells, using IL2RG Antibody.