

## Apaf-1 rabbit pAb

**Cat#: orb766983 (Manual)**

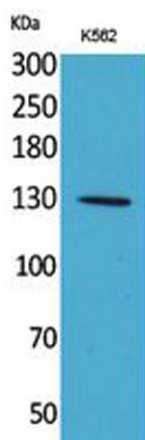
For research use only. Not intended for diagnostic use.

<b>Product Name</b>	Apaf-1 rabbit pAb
<b>Host species</b>	Rabbit
<b>Applications</b>	WB;IHC;IF;ELISA
<b>Species Cross-Reactivity</b>	Human;Mouse;Rat
<b>Recommended dilutions</b>	Western Blot: 1/500 - 1/2000. IHC-p: 1/100-1/300. ELISA: 1/20000. Not yet tested in other applications.
<b>Immunogen</b>	The antiserum was produced against synthesized peptide derived from the Internal region of human APAF1. AA range:501-550
<b>Specificity</b>	Apaf-1 Polyclonal Antibody detects endogenous levels of Apaf-1 protein.
<b>Formulation</b>	Liquid in PBS containing 50% glycerol, 0.5% BSA and 0.02% sodium azide..
<b>Storage</b>	Store at -20°C. Avoid repeated freeze-thaw cycles.
<b>Protein Name</b>	Apoptotic protease-activating factor 1
<b>Gene Name</b>	APAF1
<b>Cellular localization</b>	Cytoplasm .
<b>Purification</b>	The antibody was affinity-purified from rabbit antiserum by affinity-chromatography using epitope-specific immunogen.
<b>Clonality</b>	Polyclonal

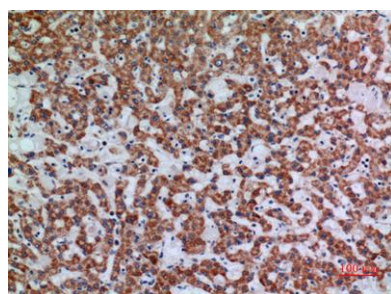
<b>Concentration</b>	1 mg/ml
<b>Observed band</b>	135kD
<b>Human Gene ID</b>	317
<b>Human Swiss-Prot Number</b>	O14727
<b>Alternative Names</b>	APAF1; KIAA0413; Apoptotic protease-activating factor 1; APAF-1

### Background

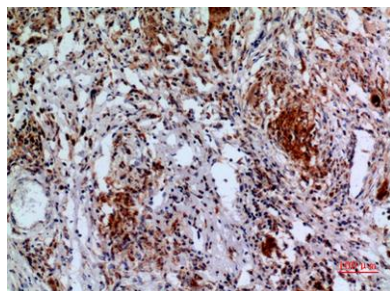
This gene encodes a cytoplasmic protein that initiates apoptosis. This protein contains several copies of the WD-40 domain, a caspase recruitment domain (CARD), and an ATPase domain (NB-ARC). Upon binding cytochrome c and dATP, this protein forms an oligomeric apoptosome. The apoptosome binds and cleaves caspase 9 preproprotein, releasing its mature, activated form. Activated caspase 9 stimulates the subsequent caspase cascade that commits the cell to apoptosis. Alternative splicing results in several transcript variants encoding different isoforms. [provided by RefSeq, Jul 2008],



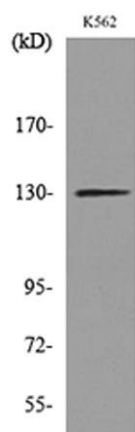
**Western Blot analysis of K562 cells using Apaf-1 Polyclonal Antibody. Secondary antibody(catalog#:RS0002) was diluted at 1:20000**



**Immunohistochemical analysis of paraffin-embedded human-liver, antibody was diluted at 1:100**



**Immunohistochemical analysis of paraffin-embedded human-lung, antibody was diluted at 1:100**



**Western blot analysis of lysate from K562 cells, using APAF1 Antibody.**