

Connexin-40 rabbit pAb**Cat#: orb766982 (Manual)**

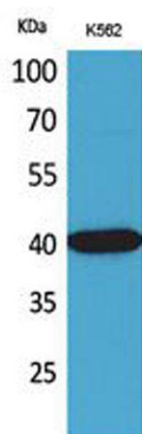
For research use only. Not intended for diagnostic use.

Product Name	Connexin-40 rabbit pAb
Host species	Rabbit
Applications	WB;ELISA
Species Cross-Reactivity	Human;Mouse;Rat
Recommended dilutions	Western Blot: 1/500 - 1/2000. ELISA: 1/20000. Not yet tested in other applications.
Immunogen	The antiserum was produced against synthesized peptide derived from the N-terminal region of human GJA5. AA range:21-70
Specificity	Connexin-40 Polyclonal Antibody detects endogenous levels of Connexin-40 protein.
Formulation	Liquid in PBS containing 50% glycerol, 0.5% BSA and 0.02% sodium azide..
Storage	Store at -20°C. Avoid repeated freeze-thaw cycles.
Protein Name	Gap junction alpha-5 protein
Gene Name	GJA5
Cellular localization	Cell membrane; Multi-pass membrane protein. Cell junction, gap junction.
Purification	The antibody was affinity-purified from rabbit antiserum by affinity-chromatography using epitope-specific immunogen.
Clonality	Polyclonal

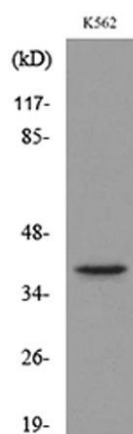
Concentration	1 mg/ml
Observed band	39kD
Human Gene ID	2702
Human Swiss-Prot Number	P36382
Alternative Names	GJA5; Gap junction alpha-5 protein; Connexin-40; Cx40

Background

This gene is a member of the connexin gene family. The encoded protein is a component of gap junctions, which are composed of arrays of intercellular channels that provide a route for the diffusion of low molecular weight materials from cell to cell. Mutations in this gene may be associated with atrial fibrillation. Alternatively spliced transcript variants encoding the same isoform have been described. [provided by RefSeq, Jul 2008],



Western Blot analysis of K562 cells using Connexin-40 Polyclonal Antibody. Secondary antibody(catalog#:RS0002) was diluted at 1:20000



Western blot analysis of lysate from K562 cells, using GJA5 Antibody.