

IFN- ϵ rabbit pAb**Cat#: orb766909 (Manual)**

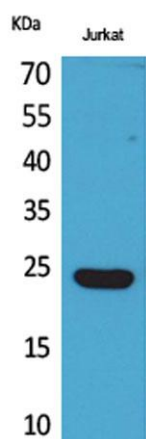
For research use only. Not intended for diagnostic use.

Product Name	IFN- ϵ rabbit pAb
Host species	Rabbit
Applications	WB;ELISA
Species Cross-Reactivity	Human;Rat;Mouse;
Recommended dilutions	Western Blot: 1/500 - 1/2000. ELISA: 1/20000. Not yet tested in other applications.
Immunogen	The antiserum was produced against synthesized peptide derived from the C-terminal region of human IFN ϵ . AA range:159-208
Specificity	IFN- ϵ Polyclonal Antibody detects endogenous levels of IFN- ϵ protein.
Formulation	Liquid in PBS containing 50% glycerol, 0.5% BSA and 0.02% sodium azide..
Storage	Store at -20°C. Avoid repeated freeze-thaw cycles.
Protein Name	Interferon epsilon
Gene Name	IFNE
Cellular localization	Secreted .
Purification	The antibody was affinity-purified from rabbit antiserum by affinity-chromatography using epitope-specific immunogen.
Clonality	Polyclonal

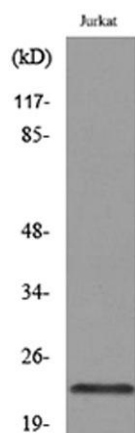
Concentration	1 mg/ml
Observed band	24kD
Human Gene ID	338376
Human Swiss-Prot Number	Q86WN2
Alternative Names	IFNE; IFNE1; Interferon epsilon; IFN-epsilon; Interferon epsilon-1

Background

similarity:Belongs to the alpha/beta interferon family.,tissue specificity:Expressed in prostate cancer cell line PC-3, amnion-derived WISH cells, SK-MEL28 melanoma cells and Daudi cells and very weakly in MCF-7 human breast cancer cells. Not detected in Namalwa cells (Burkitt's lymphoma) or in Jurkat (T) cells.,



Western Blot analysis of Jurkat cells using IFN-ε Polyclonal Antibody. Secondary antibody(catalog#:RS0002) was diluted at 1:20000



Western blot analysis of lysate from Jurkat cells, using IFNE Antibody.