

PSP rabbit pAb

Cat#: orb766900 (Manual)

For research use only. Not intended for diagnostic use.

Product Name	PSP rabbit pAb
Host species	Rabbit
Applications	WB;ELISA;IHC
Species Cross-Reactivity	Human;Rat;Mouse;
Recommended dilutions	WB 1:500-2000;IHC-p 1:50-300; ELISA 2000-20000
Immunogen	The antiserum was produced against synthesized peptide derived from the C-terminal region of human PSPN. AA range:101-150
Specificity	PSP Polyclonal Antibody detects endogenous levels of PSP protein.
Formulation	Liquid in PBS containing 50% glycerol, 0.5% BSA and 0.02% sodium azide..
Storage	Store at -20°C. Avoid repeated freeze-thaw cycles.
Protein Name	Persephin
Gene Name	PSPN
Cellular localization	Secreted.
Purification	The antibody was affinity-purified from rabbit antiserum by affinity-chromatography using epitope-specific immunogen.
Clonality	Polyclonal

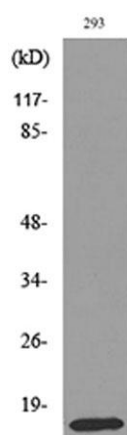
Concentration	1 mg/ml
Observed band	16kD
Human Gene ID	5623
Human Swiss-Prot Number	O60542
Alternative Names	PSPN; Persephin; PSP

Background

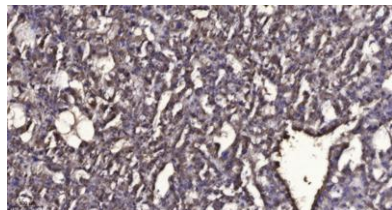
persephin(PSPN) Homo sapiens This gene encodes a secreted ligand of the GDNF (glial cell line-derived neurotrophic factor) subfamily and TGF-beta (transforming growth factor-beta) superfamily of proteins. The encoded preproprotein is proteolytically processed to generate the mature protein. This protein signals through the RET receptor tyrosine kinase and a GPI-linked coreceptor, and promotes survival of neuronal populations. This protein may play a role in cell death, and nervous system development and function. Elevated expression of this gene has been observed in oral squamous cell carcinoma. [provided by RefSeq, Aug 2016],



Western Blot analysis of 293 cells using PSP Polyclonal Antibody. Secondary antibody(catalog#:RS0002) was diluted at 1:20000



Western blot analysis of lysate from 293 cells, using PSPN Antibody.



Immunohistochemical analysis of paraffin-embedded human liver cancer. 1, Antibody was diluted at 1:200(4° overnight). 2, Tris-EDTA,pH9.0 was used for antigen retrieval. 3,Secondary antibody was diluted at 1:200(room temperature, 45min).