

**CD241 rabbit pAb****Cat#: orb766889 (Manual)**

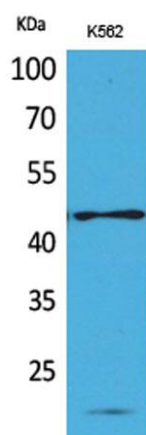
For research use only. Not intended for diagnostic use.

<b>Product Name</b>	CD241 rabbit pAb
<b>Host species</b>	Rabbit
<b>Applications</b>	WB;IHC;IF;ELISA
<b>Species Cross-Reactivity</b>	Human;Rat;Mouse;
<b>Recommended dilutions</b>	Western Blot: 1/500 - 1/2000. IHC-p: 1:100-300 ELISA: 1/20000. Not yet tested in other applications.
<b>Immunogen</b>	The antiserum was produced against synthesized peptide derived from the N-terminal region of human RHAG. AA range:1-50
<b>Specificity</b>	CD241 Polyclonal Antibody detects endogenous levels of CD241 protein.
<b>Formulation</b>	Liquid in PBS containing 50% glycerol, 0.5% BSA and 0.02% sodium azide..
<b>Storage</b>	Store at -20°C. Avoid repeated freeze-thaw cycles.
<b>Protein Name</b>	Ammonium transporter Rh type A
<b>Gene Name</b>	RHAG
<b>Cellular localization</b>	Membrane ; Multi-pass membrane protein.
<b>Purification</b>	The antibody was affinity-purified from rabbit antiserum by affinity-chromatography using epitope-specific immunogen.
<b>Clonality</b>	Polyclonal

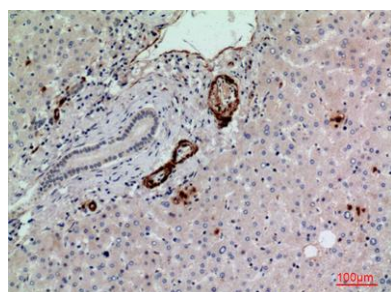
<b>Concentration</b>	1 mg/ml
<b>Observed band</b>	44kD
<b>Human Gene ID</b>	6005
<b>Human Swiss-Prot Number</b>	Q02094
<b>Alternative Names</b>	RHAG; RH50; Ammonium transporter Rh type A; Erythrocyte membrane glycoprotein Rh50; Erythrocyte plasma membrane 50 kDa glycoprotein; Rh50A; Rhesus blood group family type A glycoprotein; Rh family type A glycoprotein; Rh type A glycoprotein; Rhesus blood g

**Background**

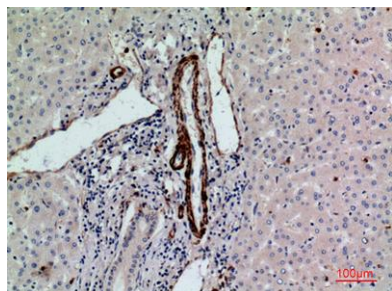
The protein encoded by this gene is erythrocyte-specific and is thought to be part of a membrane channel that transports ammonium and carbon dioxide across the blood cell membrane. The encoded protein appears to interact with Rh blood group antigens and Rh30 polypeptides. Defects in this gene are a cause of regulator type Rh-null hemolytic anemia (RHN), or Rh-deficiency syndrome.[provided by RefSeq, Mar 2009].



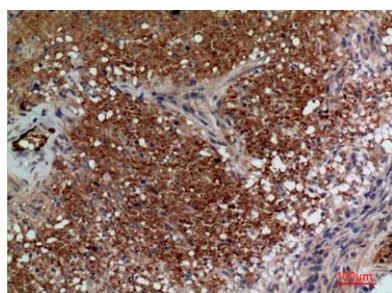
**Western Blot analysis of K562 cells using CD241 Polyclonal Antibody. Secondary antibody(catalog#:RS0002) was diluted at 1:20000**



**Immunohistochemical analysis of paraffin-embedded human-liver, antibody was diluted at 1:100**



**Immunohistochemical analysis of paraffin-embedded human-liver, antibody was diluted at 1:100**



**Immunohistochemical analysis of paraffin-embedded human-brain, antibody was diluted at 1:100**