

**CD207 rabbit pAb****Cat#: orb766880 (Manual)**

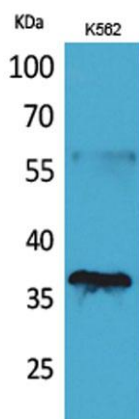
For research use only. Not intended for diagnostic use.

<b>Product Name</b>	CD207 rabbit pAb
<b>Host species</b>	Rabbit
<b>Applications</b>	WB;ELISA
<b>Species Cross-Reactivity</b>	Human;Rat;Mouse;
<b>Recommended dilutions</b>	Western Blot: 1/500 - 1/2000. ELISA: 1/20000. Not yet tested in other applications.
<b>Immunogen</b>	The antiserum was produced against synthesized peptide derived from the Internal region of human CD207. AA range:61-110
<b>Specificity</b>	CD207 Polyclonal Antibody detects endogenous levels of CD207 protein.
<b>Formulation</b>	Liquid in PBS containing 50% glycerol, 0.5% BSA and 0.02% sodium azide..
<b>Storage</b>	Store at -20°C. Avoid repeated freeze-thaw cycles.
<b>Protein Name</b>	C-type lectin domain family 4 member K
<b>Gene Name</b>	CD207
<b>Cellular localization</b>	Membrane ; Single-pass type II membrane protein . Found in Birbeck granules (BGs), which are organelles consisting of superimposed and zippered membranes.
<b>Purification</b>	The antibody was affinity-purified from rabbit antiserum by affinity-chromatography using epitope-specific immunogen.

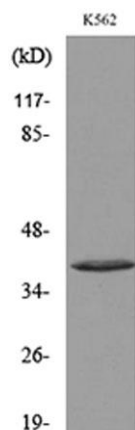
<b>Clonality</b>	Polyclonal
<b>Concentration</b>	1 mg/ml
<b>Observed band</b>	38kD
<b>Human Gene ID</b>	50489
<b>Human Swiss-Prot Number</b>	Q9UJ71
<b>Alternative Names</b>	CD207; CLEC4K; C-type lectin domain family 4 member K; Langerin; CD207

### Background

The protein encoded by this gene is expressed only in Langerhans cells which are immature dendritic cells of the epidermis and mucosa. It is localized in the Birbeck granules, organelles present in the cytoplasm of Langerhans cells and consisting of superimposed and zippered membranes. It is a C-type lectin with mannose binding specificity, and it has been proposed that mannose binding by this protein leads to internalization of antigen into Birbeck granules and providing access to a nonclassical antigen-processing pathway. Mutations in this gene result in Birbeck granules deficiency or loss of sugar binding activity. [provided by RefSeq, Aug 2010],



**Western Blot analysis of K562 cells using CD207 Polyclonal Antibody. Secondary antibody(catalog#:RS0002) was diluted at 1:20000**



Western blot analysis of lysate from K562 cells, using CD207 Antibody.