

## Nectin 3 rabbit pAb

**Cat#: orb766866 (Manual)**

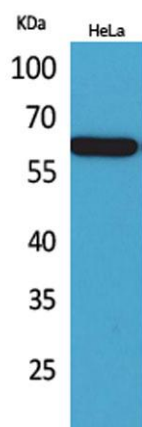
For research use only. Not intended for diagnostic use.

<b>Product Name</b>	Nectin 3 rabbit pAb
<b>Host species</b>	Rabbit
<b>Applications</b>	WB;ELISA
<b>Species Cross-Reactivity</b>	Human;Mouse;Rat
<b>Recommended dilutions</b>	Western Blot: 1/500 - 1/2000. ELISA: 1/20000. Not yet tested in other applications.
<b>Immunogen</b>	The antiserum was produced against synthesized peptide derived from the Internal region of human PVRL3. AA range:311-360
<b>Specificity</b>	Nectin 3 Polyclonal Antibody detects endogenous levels of Nectin 3 protein.
<b>Formulation</b>	Liquid in PBS containing 50% glycerol, 0.5% BSA and 0.02% sodium azide..
<b>Storage</b>	Store at -20°C. Avoid repeated freeze-thaw cycles.
<b>Protein Name</b>	Poliovirus receptor-related protein 3
<b>Gene Name</b>	PVRL3
<b>Cellular localization</b>	Cell membrane ; Single-pass membrane protein . Cell junction, synapse, postsynaptic cell membrane .
<b>Purification</b>	The antibody was affinity-purified from rabbit antiserum by affinity-chromatography using epitope-specific immunogen.
<b>Clonality</b>	Polyclonal

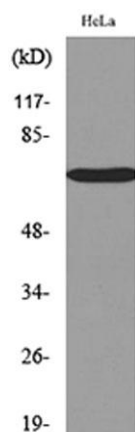
<b>Concentration</b>	1 mg/ml
<b>Observed band</b>	60kD
<b>Human Gene ID</b>	25945
<b>Human Swiss-Prot Number</b>	Q9NQS3
<b>Alternative Names</b>	PVRL3; PRR3; Poliovirus receptor-related protein 3; CDw113; Nectin-3; CD113

### Background

This gene encodes a member of the nectin family of proteins, which function as adhesion molecules at adherens junctions. This family member interacts with other nectin-like proteins and with afadin, a filamentous actin-binding protein involved in the regulation of directional motility, cell proliferation and survival. This gene plays a role in ocular development involving the ciliary body. Mutations in this gene are believed to result in congenital ocular defects. Alternative splicing results in multiple transcript variants. [provided by RefSeq, Aug 2011],



**Western Blot analysis of HeLa cells using Nectin 3 Polyclonal Antibody. Secondary antibody(catalog#:RS0002) was diluted at 1:20000**



**Western blot analysis of lysate from HeLa cells, using PVRL3 Antibody.**



Explore. Bioreagents.

[www.biorbyt.com](http://www.biorbyt.com)