

CD107a rabbit pAb**Cat#: orb766865 (Manual)**

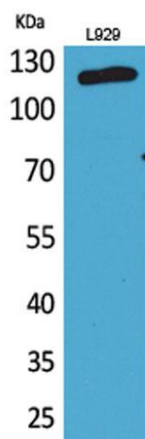
For research use only. Not intended for diagnostic use.

Product Name	CD107a rabbit pAb
Host species	Rabbit
Applications	WB;ELISA
Species Cross-Reactivity	Human;Rat;Mouse;
Recommended dilutions	Western Blot: 1/500 - 1/2000. ELISA: 1/20000. Not yet tested in other applications.
Immunogen	The antiserum was produced against synthesized peptide derived from the Internal region of human LAMP1. AA range:211-260
Specificity	CD107a Polyclonal Antibody detects endogenous levels of CD107a protein.
Formulation	Liquid in PBS containing 50% glycerol, 0.5% BSA and 0.02% sodium azide..
Storage	Store at -20°C. Avoid repeated freeze-thaw cycles.
Protein Name	Lysosome-associated membrane glycoprotein 1
Gene Name	LAMP1
Cellular localization	Cell membrane ; Single-pass type I membrane protein . Endosome membrane; Single-pass type I membrane protein . Lysosome membrane ; Single-pass type I membrane protein . Late endosome membrane ; Single-pass type I membrane protein . Cytolytic granule membr
Purification	The antibody was affinity-purified from rabbit antiserum by affinity-chromatography using epitope-specific immunogen.

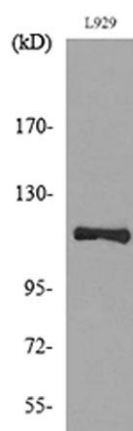
Clonality	Polyclonal
Concentration	1 mg/ml
Observed band	120kD
Human Gene ID	3916
Human Swiss-Prot Number	P11279
Alternative Names	LAMP1; Lysosome-associated membrane glycoprotein 1; LAMP-1; Lysosome-associated membrane protein 1; CD107 antigen-like family member A; CD107a

Background

The protein encoded by this gene is a member of a family of membrane glycoproteins. This glycoprotein provides selectins with carbohydrate ligands. It may also play a role in tumor cell metastasis. [provided by RefSeq, Jul 2008],



Western Blot analysis of L929 cells using CD107a Polyclonal Antibody. Secondary antibody(catalog#:RS0002) was diluted at 1:20000



Western blot analysis of lysate from L929 cells, using LAMP1 Antibody.