

CD58 rabbit pAb

Cat#: orb766856 (Manual)

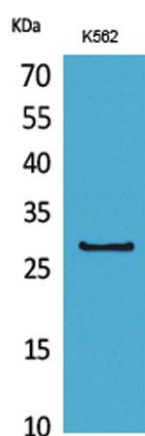
For research use only. Not intended for diagnostic use.

Product Name	CD58 rabbit pAb
Host species	Rabbit
Applications	WB;IHC;IF;ELISA
Species Cross-Reactivity	Human;Rat;Mouse;
Recommended dilutions	Western Blot: 1/500 - 1/2000. IHC-p: 1:100-300 ELISA: 1/20000. Not yet tested in other applications.
Immunogen	The antiserum was produced against synthesized peptide derived from the Internal region of human CD58. AA range:31-80
Specificity	CD58 Polyclonal Antibody detects endogenous levels of CD58 protein.
Formulation	Liquid in PBS containing 50% glycerol, 0.5% BSA and 0.02% sodium azide..
Storage	Store at -20°C. Avoid repeated freeze-thaw cycles.
Protein Name	Lymphocyte function-associated antigen 3
Gene Name	CD58
Cellular localization	[Isoform 1]: Cell membrane; Single-pass type I membrane protein.
Purification	The antibody was affinity-purified from rabbit antiserum by affinity-chromatography using epitope-specific immunogen.
Clonality	Polyclonal

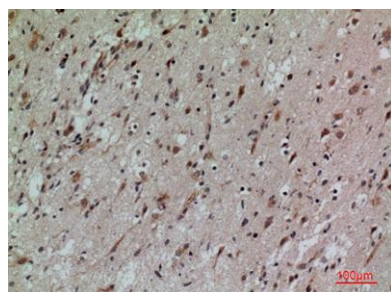
Concentration	1 mg/ml
Observed band	27kD
Human Gene ID	965
Human Swiss-Prot Number	P19256
Alternative Names	CD58; LFA3; Lymphocyte function-associated antigen 3; Ag3; Surface glycoprotein LFA-3; CD58

Background

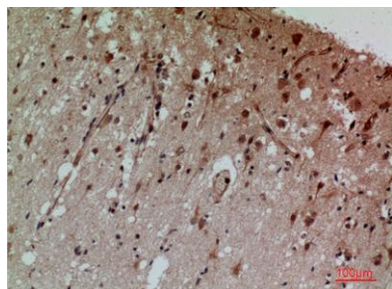
This gene encodes a member of the immunoglobulin superfamily. The encoded protein is a ligand of the T lymphocyte CD2 protein, and functions in adhesion and activation of T lymphocytes. The protein is localized to the plasma membrane. Alternatively spliced transcript variants have been described. [provided by RefSeq, Jan 2009],



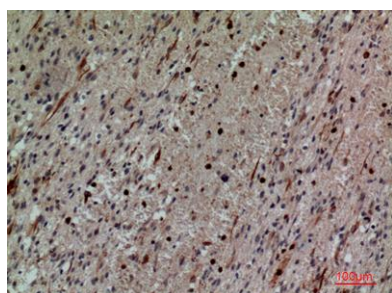
Western Blot analysis of K562 cells using CD58 Polyclonal Antibody. Secondary antibody(catalog#:RS0002) was diluted at 1:20000



Immunohistochemical analysis of paraffin-embedded human-brain, antibody was diluted at 1:100



Immunohistochemical analysis of paraffin-embedded human-brain, antibody was diluted at 1:100



Immunohistochemical analysis of paraffin-embedded human-brain, antibody was diluted at 1:100