

**CD55 rabbit pAb****Cat#: orb766855 (Manual)**

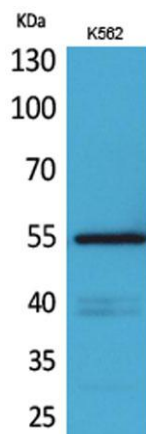
For research use only. Not intended for diagnostic use.

<b>Product Name</b>	CD55 rabbit pAb
<b>Host species</b>	Rabbit
<b>Applications</b>	WB;ELISA
<b>Species Cross-Reactivity</b>	Human;Rat;Mouse;
<b>Recommended dilutions</b>	Western Blot: 1/500 - 1/2000. ELISA: 1/20000. Not yet tested in other applications.
<b>Immunogen</b>	The antiserum was produced against synthesized peptide derived from the Internal region of human CD55. AA range:241-290
<b>Specificity</b>	CD55 Polyclonal Antibody detects endogenous levels of CD55 protein.
<b>Formulation</b>	Liquid in PBS containing 50% glycerol, 0.5% BSA and 0.02% sodium azide..
<b>Storage</b>	Store at -20°C. Avoid repeated freeze-thaw cycles.
<b>Protein Name</b>	Complement decay-accelerating factor
<b>Gene Name</b>	CD55
<b>Cellular localization</b>	[Isoform 1]: Cell membrane; Single-pass type I membrane protein.; [Isoform 2]: Cell membrane; Lipid-anchor, GPI-anchor.; [Isoform 3]: Secreted .; [Isoform 4]: Secreted .; [Isoform 5]: Secreted .; [Isoform 6]: Cell membrane ; Lipid-anchor, GPI-anchor .; [I
<b>Purification</b>	The antibody was affinity-purified from rabbit antiserum by affinity-chromatography using epitope-specific immunogen.

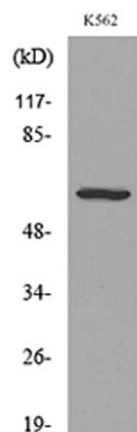
<b>Clonality</b>	Polyclonal
<b>Concentration</b>	1 mg/ml
<b>Observed band</b>	42kD
<b>Human Gene ID</b>	1604
<b>Human Swiss-Prot Number</b>	P08174
<b>Alternative Names</b>	CD55; CR; DAF; Complement decay-accelerating factor; CD55

### Background

This gene encodes a glycoprotein involved in the regulation of the complement cascade. Binding of the encoded protein to complement proteins accelerates their decay, thereby disrupting the cascade and preventing damage to host cells. Antigens present on this protein constitute the Cromer blood group system (CROM). Alternative splicing results in multiple transcript variants. The predominant transcript variant encodes a membrane-bound protein, but alternatively spliced transcripts may produce soluble proteins. [provided by RefSeq, Jul 2014],



**Western Blot analysis of K562 cells using CD55 Polyclonal Antibody. Secondary antibody(catalog#:RS0002) was diluted at 1:20000**



Western blot analysis of lysate from K562 cells, using CD55 Antibody.