

CD1D rabbit pAb**Cat#: orb766844 (Manual)**

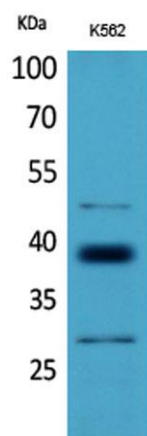
For research use only. Not intended for diagnostic use.

Product Name	CD1D rabbit pAb
Host species	Rabbit
Applications	WB;IHC;IF;ELISA
Species Cross-Reactivity	Human;Rat;Mouse;
Recommended dilutions	Western Blot: 1/500 - 1/2000. IHC-p: 1:100-300 ELISA: 1/20000. Not yet tested in other applications.
Immunogen	Synthesized peptide derived from Antigen-presenting glycoprotein CD1d at AA range: 161-210
Specificity	CD1D Polyclonal Antibody detects endogenous levels of CD1D protein.
Formulation	Liquid in PBS containing 50% glycerol, 0.5% BSA and 0.02% sodium azide..
Storage	Store at -20°C. Avoid repeated freeze-thaw cycles.
Protein Name	Antigen-presenting glycoprotein CD1d
Gene Name	CD1D
Cellular localization	Cell membrane ; Single-pass type I membrane protein . Basolateral cell membrane ; Single-pass type I membrane protein . Endosome membrane ; Single-pass type I membrane protein . Lysosome membrane ; Single-pass type I membrane protein . Endoplasmic reticulum membrane ; Single-pass type I membrane protein . Subject to intracellular trafficking between the cell membrane, endosomes and lysosomes. .

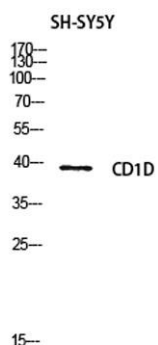
Purification	The antibody was affinity-purified from rabbit antiserum by affinity-chromatography using epitope-specific immunogen.
Clonality	Polyclonal
Concentration	1 mg/ml
Observed band	37kD
Human Gene ID	912
Human Swiss-Prot Number	P15813
Alternative Names	CD1D; Antigen-presenting glycoprotein CD1d; R3G1; CD1d

Background

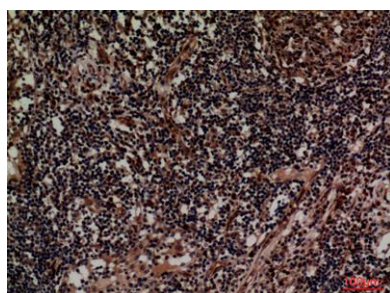
This gene encodes a divergent member of the CD1 family of transmembrane glycoproteins, which are structurally related to the major histocompatibility complex (MHC) proteins and form heterodimers with beta-2-microglobulin. The CD1 proteins mediate the presentation of primarily lipid and glycolipid antigens of self or microbial origin to T cells. The human genome contains five CD1 family genes organized in a cluster on chromosome 1. The CD1 family members are thought to differ in their cellular localization and specificity for particular lipid ligands. The protein encoded by this gene localizes to late endosomes and lysosomes via a tyrosine-based motif in the cytoplasmic tail. Two transcript variants encoding different isoforms have been found for this gene. [provided by RefSeq, Jan 2016],



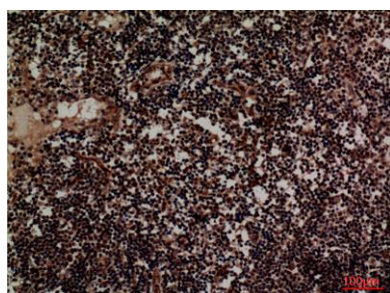
Western Blot analysis of K562 cells using CD1D Polyclonal Antibody. Antibody was diluted at 1:500. Secondary antibody(catalog#:RS0002) was diluted at 1:20000



Western blot analysis of SH-SY5Y lysis using CD1D antibody. Antibody was diluted at 1:500. Secondary antibody(catalog#:RS0002) was diluted at 1:20000



Immunohistochemical analysis of paraffin-embedded human-lymph, antibody was diluted at 1:100



Immunohistochemical analysis of paraffin-embedded human-lymph, antibody was diluted at 1:100