

CD1C rabbit pAb**Cat#: orb766843 (Manual)**

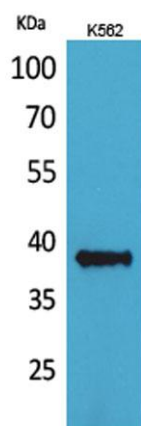
For research use only. Not intended for diagnostic use.

Product Name	CD1C rabbit pAb
Host species	Rabbit
Applications	WB;ELISA
Species Cross-Reactivity	Human;Rat;Mouse;
Recommended dilutions	Western Blot: 1/500 - 1/2000. ELISA: 1/20000. Not yet tested in other applications.
Immunogen	The antiserum was produced against synthesized peptide derived from the Internal region of human CD1C. AA range:211-260
Specificity	CD1C Polyclonal Antibody detects endogenous levels of CD1C protein.
Formulation	Liquid in PBS containing 50% glycerol, 0.5% BSA and 0.02% sodium azide..
Storage	Store at -20°C. Avoid repeated freeze-thaw cycles.
Protein Name	T-cell surface glycoprotein CD1c
Gene Name	CD1C
Cellular localization	Cell membrane ; Single-pass type I membrane protein . Endosome membrane ; Single-pass type I membrane protein. Lysosome . Subject to intracellular trafficking between the cell membrane and endosomes. .
Purification	The antibody was affinity-purified from rabbit antiserum by affinity-chromatography using epitope-specific immunogen.

Clonality	Polyclonal
Concentration	1 mg/ml
Observed band	37kD
Human Gene ID	911
Human Swiss-Prot Number	P29017
Alternative Names	CD1C; T-cell surface glycoprotein CD1c; CD1c

Background

This gene encodes a member of the CD1 family of transmembrane glycoproteins, which are structurally related to the major histocompatibility complex (MHC) proteins and form heterodimers with beta-2-microglobulin. The CD1 proteins mediate the presentation of primarily lipid and glycolipid antigens of self or microbial origin to T cells. The human genome contains five CD1 family genes organized in a cluster on chromosome 1. The CD1 family members are thought to differ in their cellular localization and specificity for particular lipid ligands. The protein encoded by this gene is broadly distributed throughout the endocytic system via a tyrosine-based motif in the cytoplasmic tail. Alternatively spliced transcript variants of this gene have been observed, but their full-length nature is not known. [provided by RefSeq, Jul 2008],



Western Blot analysis of K562 cells using CD1C Polyclonal Antibody. Secondary antibody(catalog#:RS0002) was diluted at 1:20000