

**HoxD3 rabbit pAb****Cat#: orb766800 (Manual)**

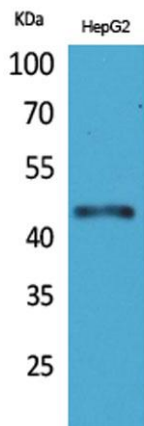
For research use only. Not intended for diagnostic use.

<b>Product Name</b>	HoxD3 rabbit pAb
<b>Host species</b>	Rabbit
<b>Applications</b>	WB;IHC;IF;ELISA
<b>Species Cross-Reactivity</b>	Human;Mouse;Rat
<b>Recommended dilutions</b>	Western Blot: 1/500 - 1/2000. IHC-p: 1:100-300 ELISA: 1/20000. Not yet tested in other applications.
<b>Immunogen</b>	The antiserum was produced against synthesized peptide derived from the Internal region of human HOXD3. AA range:211-260
<b>Specificity</b>	HoxD3 Polyclonal Antibody detects endogenous levels of HoxD3 protein.
<b>Formulation</b>	Liquid in PBS containing 50% glycerol, 0.5% BSA and 0.02% sodium azide..
<b>Storage</b>	Store at -20°C. Avoid repeated freeze-thaw cycles.
<b>Protein Name</b>	Homeobox protein Hox-D3
<b>Gene Name</b>	HOXD3
<b>Cellular localization</b>	Nucleus.
<b>Purification</b>	The antibody was affinity-purified from rabbit antiserum by affinity-chromatography using epitope-specific immunogen.
<b>Clonality</b>	Polyclonal

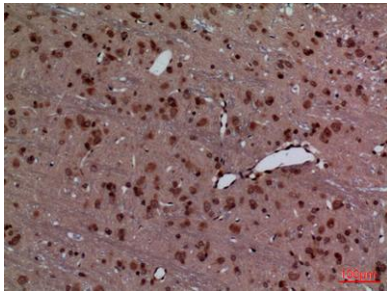
<b>Concentration</b>	1 mg/ml
<b>Observed band</b>	45kD
<b>Human Gene ID</b>	3232
<b>Human Swiss-Prot Number</b>	P31249
<b>Alternative Names</b>	HOXD3; HOX1D; HOX4A; Homeobox protein Hox-D3; Homeobox protein Hox-4A

**Background**

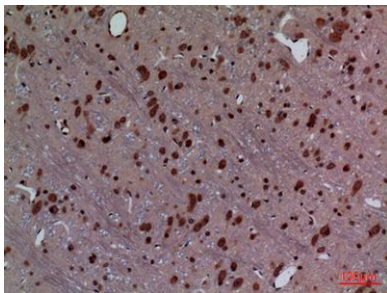
This gene belongs to the homeobox family of genes. The homeobox genes encode a highly conserved family of transcription factors that play an important role in morphogenesis in all multicellular organisms. Mammals possess four similar homeobox gene clusters, HOXA, HOXB, HOXC and HOXD, located on different chromosomes, consisting of 9 to 11 genes arranged in tandem. This gene is one of several homeobox HOXD genes located at 2q31-2q37 chromosome regions. Deletions that removed the entire HOXD gene cluster or 5' end of this cluster have been associated with severe limb and genital abnormalities. The protein encoded by this gene may play a role in the regulation of cell adhesion processes. [provided by RefSeq, Jul 2008],



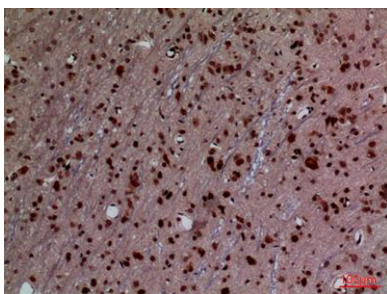
**Western Blot analysis of HepG2 cells using HoxD3 Polyclonal Antibody. Secondary antibody(catalog#:RS0002) was diluted at 1:20000 cells nucleus extracted by Minute TM Cytoplasmic and Nuclear Fractionation kit (SC-003,Inventbiotech,MN,USA).**



**Immunohistochemical analysis of paraffin-embedded rat-brain, antibody was diluted at 1:100**



**Immunohistochemical analysis of paraffin-embedded rat-brain, antibody was diluted at 1:100**



**Immunohistochemical analysis of paraffin-embedded rat-brain, antibody was diluted at 1:100**