

Cdc34 rabbit pAb**Cat#: orb766794 (Manual)**

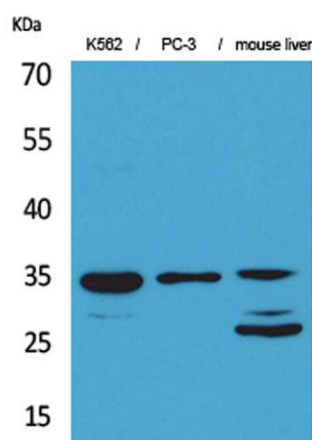
For research use only. Not intended for diagnostic use.

Product Name	Cdc34 rabbit pAb
Host species	Rabbit
Applications	WB;IHC;IF;ELISA
Species Cross-Reactivity	Human;Mouse;Rat
Recommended dilutions	Western Blot: 1/500 - 1/2000. IHC-p: 1:100-300 ELISA: 1/20000. Not yet tested in other applications.
Immunogen	The antiserum was produced against synthesized peptide derived from the Internal region of human CDC34. AA range:121-170
Specificity	Cdc34 Polyclonal Antibody detects endogenous levels of Cdc34 protein.
Formulation	Liquid in PBS containing 50% glycerol, 0.5% BSA and 0.02% sodium azide..
Storage	Store at -20°C. Avoid repeated freeze-thaw cycles.
Protein Name	Ubiquitin-conjugating enzyme E2 R1
Gene Name	CDC34
Cellular localization	Cytoplasm. Nucleus. The phosphorylation of the C-terminal tail plays an important role in mediating nuclear localization. Colocalizes with beta-tubulin on mitotic spindles in anaphase.
Purification	The antibody was affinity-purified from rabbit antiserum by affinity-chromatography using epitope-specific immunogen.

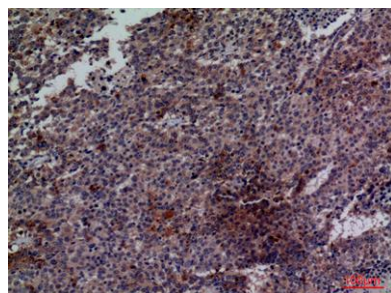
Clonality	Polyclonal
Concentration	1 mg/ml
Observed band	34kD
Human Gene ID	997
Human Swiss-Prot Number	P49427
Alternative Names	CDC34; UBC3; UBE2R1; Ubiquitin-conjugating enzyme E2 R1; Ubiquitin-conjugating enzyme E2-32 kDa complementing; Ubiquitin-conjugating enzyme E2-CDC34; Ubiquitin-protein ligase R1

Background

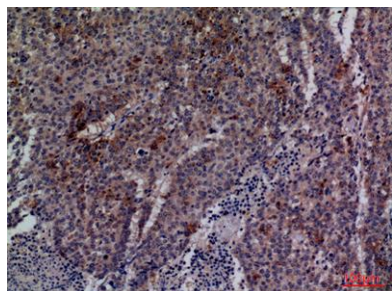
The protein encoded by this gene is a member of the ubiquitin-conjugating enzyme family. Ubiquitin-conjugating enzyme catalyzes the covalent attachment of ubiquitin to other proteins. This protein is a part of the large multiprotein complex, which is required for ubiquitin-mediated degradation of cell cycle G1 regulators, and for the initiation of DNA replication. [provided by RefSeq, Jul 2008],



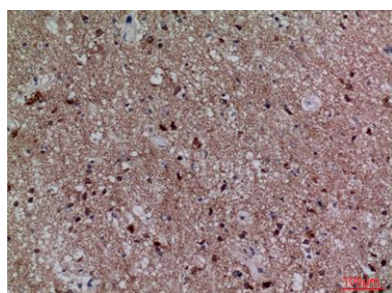
Western Blot analysis of K562, PC-3, mouse liver cells using Cdc34 Polyclonal Antibody. Secondary antibody(catalog#:RS0002) was diluted at 1:20000 cells nucleus extracted by Minute TM Cytoplasmic and Nuclear Fractionation kit (SC-003, Invent biotech, MN, USA).



Immunohistochemical analysis of paraffin-embedded human lung cancer, antibody was diluted at 1:100



Immunohistochemical analysis of paraffin-embedded human lung cancer, antibody was diluted at 1:100



Immunohistochemical analysis of paraffin-embedded human lung cancer, antibody was diluted at 1:100