

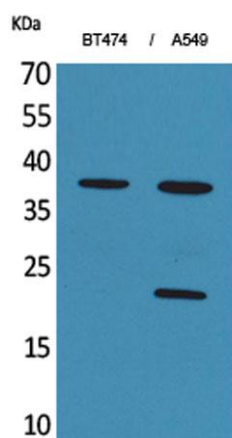
**IFN- $\alpha$ 1 rabbit pAb****Cat#: orb766775 (Manual)**

For research use only. Not intended for diagnostic use.

<b>Product Name</b>	IFN- $\alpha$ 1 rabbit pAb
<b>Host species</b>	Rabbit
<b>Applications</b>	WB;ELISA
<b>Species Cross-Reactivity</b>	Human;Rat;Mouse;
<b>Recommended dilutions</b>	Western Blot: 1/500 - 1/2000. ELISA: 1/20000. Not yet tested in other applications.
<b>Immunogen</b>	The antiserum was produced against synthesized peptide derived from the C-terminal region of human IFNA1/13. AA range:140-189
<b>Specificity</b>	IFN- $\alpha$ 1 Polyclonal Antibody detects endogenous levels of IFN- $\alpha$ 1 protein.
<b>Formulation</b>	Liquid in PBS containing 50% glycerol, 0.5% BSA and 0.02% sodium azide..
<b>Storage</b>	Store at -20°C. Avoid repeated freeze-thaw cycles.
<b>Protein Name</b>	Interferon alpha-1/13
<b>Gene Name</b>	IFNA1/IFNA13
<b>Cellular localization</b>	Secreted.
<b>Purification</b>	The antibody was affinity-purified from rabbit antiserum by affinity-chromatography using epitope-specific immunogen.
<b>Clonality</b>	Polyclonal

<b>Concentration</b>	1 mg/ml
<b>Observed band</b>	22kD
<b>Human Gene ID</b>	3439
<b>Human Swiss-Prot Number</b>	P01562
<b>Alternative Names</b>	IFNA1; IFNA13; Interferon alpha-1/13; IFN-alpha-1/13; Interferon alpha-D; LeIF D

**Background** The protein encoded by this gene is produced by macrophages and has antiviral activity. This gene is intronless and the encoded protein is secreted. [provided by RefSeq, Sep 2011],



**Western Blot analysis of BT474, A549 cells using IFN- $\alpha$ 1 Polyclonal Antibody. Secondary antibody(catalog#:RS0002) was diluted at 1:20000**