

BNIP-3 rabbit pAb**Cat#: orb766759 (Manual)**

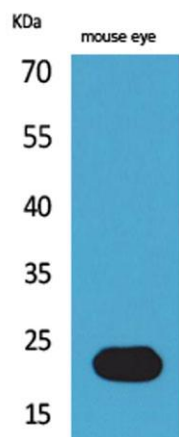
For research use only. Not intended for diagnostic use.

Product Name	BNIP-3 rabbit pAb
Host species	Rabbit
Applications	WB;IHC;IF;ELISA
Species Cross-Reactivity	Human;Rat;Mouse;
Recommended dilutions	Western Blot: 1/500 - 1/2000. IHC-p: 1:100-300 ELISA: 1/20000. Not yet tested in other applications.
Immunogen	The antiserum was produced against synthesized peptide derived from the Internal region of human BNIP3. AA range:71-120
Specificity	BNIP-3 Polyclonal Antibody detects endogenous levels of BNIP-3 protein.
Formulation	Liquid in PBS containing 50% glycerol, 0.5% BSA and 0.02% sodium azide..
Storage	Store at -20°C. Avoid repeated freeze-thaw cycles.
Protein Name	BCL2/adenovirus E1B 19 kDa protein-interacting protein 3
Gene Name	BNIP3
Cellular localization	Mitochondrion. Mitochondrion outer membrane; Single-pass membrane protein. Coexpression with the E1B 19-kDa protein results in a shift in NIP3 localization pattern to the nuclear envelope. Colocalizes with ACAA2 in the mitochondria. Colocalizes with SPATA18 at the mitochondrion outer membrane.
Purification	The antibody was affinity-purified from rabbit antiserum by affinity-chromatography using epitope-specific immunogen.

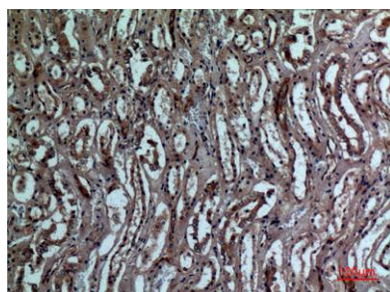
Clonality	Polyclonal
Concentration	1 mg/ml
Observed band	22kD
Human Gene ID	664
Human Swiss-Prot Number	Q12983
Alternative Names	BNIP3; NIP3; BCL2/adenovirus E1B 19 kDa protein-interacting protein 3

Background

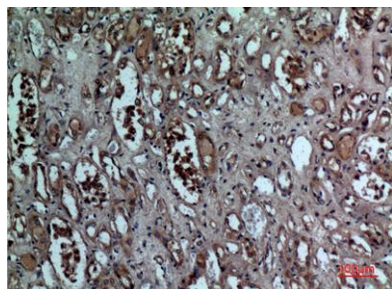
This gene encodes a mitochondrial protein that contains a BH3 domain and acts as a pro-apoptotic factor. The encoded protein interacts with anti-apoptotic proteins, including the E1B 19 kDa protein and Bcl2. This gene is silenced in tumors by DNA methylation. [provided by RefSeq, Dec 2014],



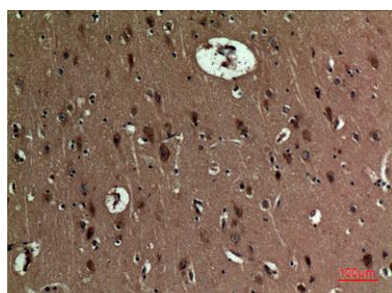
Western Blot analysis of mouse eye cells using BNIP-3 Polyclonal Antibody. Secondary antibody(catalog#:RS0002) was diluted at 1:20000



Immunohistochemical analysis of paraffin-embedded human kidney, antibody was diluted at 1:100



Immunohistochemical analysis of paraffin-embedded human-kidney, antibody was diluted at 1:100



Immunohistochemical analysis of paraffin-embedded human-brain, antibody was diluted at 1:100