

**Sg III rabbit pAb****Cat#: orb766747 (Manual)**

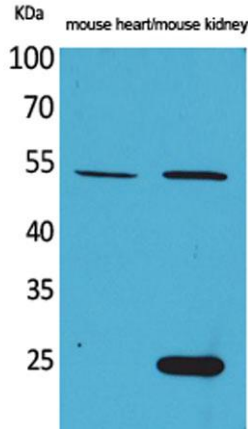
For research use only. Not intended for diagnostic use.

<b>Product Name</b>	Sg III rabbit pAb
<b>Host species</b>	Rabbit
<b>Applications</b>	WB;IHC;IF;ELISA
<b>Species Cross-Reactivity</b>	Human;Rat
<b>Recommended dilutions</b>	Western Blot: 1/500 - 1/2000. IHC-p: 1:100-300 ELISA: 1/20000. Not yet tested in other applications.
<b>Immunogen</b>	The antiserum was produced against synthesized peptide derived from the N-terminal region of human SCG3. AA range:21-70
<b>Specificity</b>	Sg III Polyclonal Antibody detects endogenous levels of Sg III protein.
<b>Formulation</b>	Liquid in PBS containing 50% glycerol, 0.5% BSA and 0.02% sodium azide..
<b>Storage</b>	Store at -20°C. Avoid repeated freeze-thaw cycles.
<b>Protein Name</b>	Secretogranin-3
<b>Gene Name</b>	SCG3
<b>Cellular localization</b>	Cytoplasmic vesicle, secretory vesicle . Cytoplasmic vesicle, secretory vesicle membrane ; Peripheral membrane protein . Secreted . Associated with the secretory granule membrane through direct binding to cholesterol-enriched lipid rafts. .
<b>Purification</b>	The antibody was affinity-purified from rabbit antiserum by affinity-chromatography using epitope-specific immunogen.

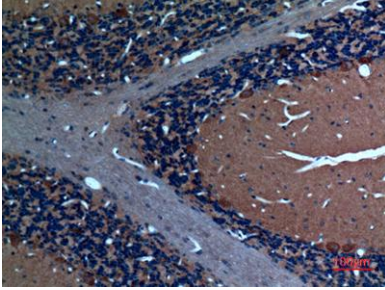
<b>Clonality</b>	Polyclonal
<b>Concentration</b>	1 mg/ml
<b>Observed band</b>	53kD
<b>Human Gene ID</b>	29106
<b>Human Swiss-Prot Number</b>	Q8WXD2
<b>Alternative Names</b>	SCG3; Secretogranin-3; Secretogranin III; SgIII

## Background

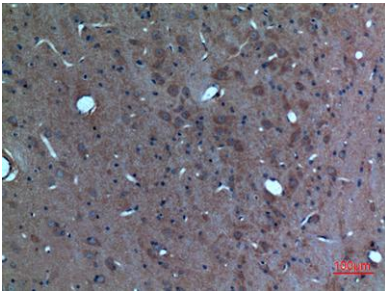
secretogranin III(SCG3) Homo sapiens The protein encoded by this gene is a member of the chromogranin/secretogranin family of neuroendocrine secretory proteins. Granins may serve as precursors for biologically active peptides. Some granins have been shown to function as helper proteins in sorting and proteolytic processing of prohormones; however, the function of this protein is unknown. Two transcript variants encoding different isoforms have been found for this gene. [provided by RefSeq, Sep 2009],



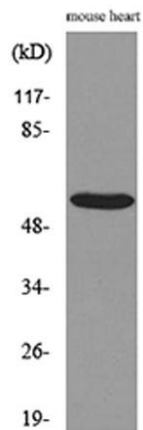
**Western Blot analysis of mouse heart, mouse kidney cells using Sg III Polyclonal Antibody. Secondary antibody(catalog#:RS0002) was diluted at 1:20000**



**Immunohistochemical analysis of paraffin-embedded rat-brain, antibody was diluted at 1:100**



**Immunohistochemical analysis of paraffin-embedded rat-brain, antibody was diluted at 1:100**



**Western blot analysis of lysate from mouse heart cells, using SCG3 Antibody.**