

Cathepsin L rabbit pAb

Cat#: orb766729 (Manual)

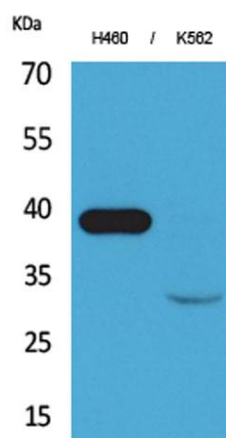
For research use only. Not intended for diagnostic use.

Product Name	Cathepsin L rabbit pAb
Host species	Rabbit
Applications	WB;IHC;IF;ELISA
Species Cross-Reactivity	Human;Rat;Mouse;
Recommended dilutions	Western Blot: 1/500 - 1/2000. IHC-p: 1:100-300 ELISA: 1/20000. Not yet tested in other applications.
Immunogen	Synthesized peptide derived from the Internal region of human Cathepsin L.
Specificity	Cathepsin L Polyclonal Antibody detects endogenous levels of Cathepsin L protein.
Formulation	Liquid in PBS containing 50% glycerol, 0.5% BSA and 0.02% sodium azide..
Storage	Store at -20°C. Avoid repeated freeze-thaw cycles.
Protein Name	Cathepsin L1
Gene Name	CTSL1
Cellular localization	Lysosome . Apical cell membrane ; Peripheral membrane protein ; Extracellular side . Cytoplasmic vesicle, secretory vesicle, chromaffin granule . Secreted, extracellular space . Secreted . Localizes to the apical membrane of thyroid epithelial cells. Released at extracellular space by activated dendritic cells and macrophages. .; [Isoform 2]: Nucleus . Translation initiation at downstream start sites allows the synthesis of isoforms that are devoid of a signal peptide and do not transit through the endoplasmic reticulum to localize to the nucleus (PubMed:15099520). Nuclear location varies during the cell cycle, with higher levels during S phase (PubMed:15099520). .

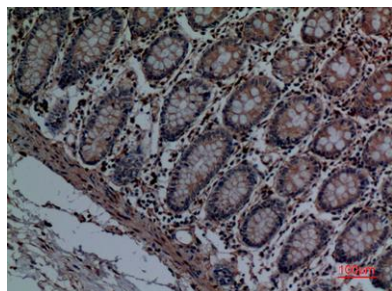
Purification	The antibody was affinity-purified from rabbit antiserum by affinity-chromatography using epitope-specific immunogen.
Clonality	Polyclonal
Concentration	1 mg/ml
Observed band	37kD
Human Gene ID	1514
Human Swiss-Prot Number	P07711
Alternative Names	CTSL1; CTSL; Cathepsin L1; Major excreted protein; MEP

Background

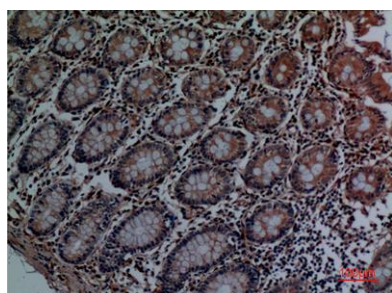
The protein encoded by this gene is a lysosomal cysteine proteinase that plays a major role in intracellular protein catabolism. Its substrates include collagen and elastin, as well as alpha-1 protease inhibitor, a major controlling element of neutrophil elastase activity. The encoded protein has been implicated in several pathologic processes, including myofibril necrosis in myopathies and in myocardial ischemia, and in the renal tubular response to proteinuria. This protein, which is a member of the peptidase C1 family, is a dimer composed of disulfide-linked heavy and light chains, both produced from a single protein precursor. Multiple alternatively spliced transcript variants have been found for this gene. [provided by RefSeq, Apr 2012],



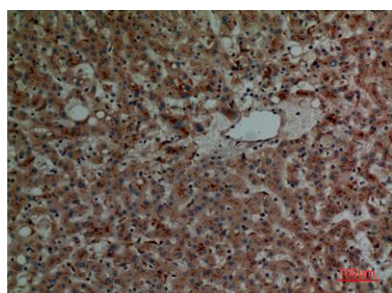
Western Blot analysis of H460, K562 cells using Cathepsin L Polyclonal Antibody. Secondary antibody(catalog#:RS0002) was diluted at 1:20000



Immunohistochemical analysis of paraffin-embedded human-colon, antibody was diluted at 1:100



Immunohistochemical analysis of paraffin-embedded human-colon, antibody was diluted at 1:100



Immunohistochemical analysis of paraffin-embedded human-liver, antibody was diluted at 1:100