

Chymase rabbit pAb

Cat#: orb766728 (Manual)

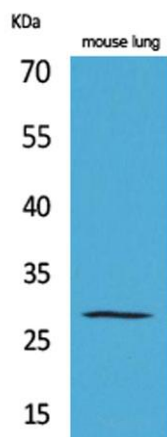
For research use only. Not intended for diagnostic use.

Product Name	Chymase rabbit pAb
Host species	Rabbit
Applications	WB;ELISA
Species Cross-Reactivity	Human;Rat;Mouse;
Recommended dilutions	Western Blot: 1/500 - 1/2000. ELISA: 1/20000. Not yet tested in other applications.
Immunogen	Synthesized peptide derived from the Internal region of human Chymase.
Specificity	Chymase Polyclonal Antibody detects endogenous levels of Chymase protein.
Formulation	Liquid in PBS containing 50% glycerol, 0.5% BSA and 0.02% sodium azide..
Storage	Store at -20°C. Avoid repeated freeze-thaw cycles.
Protein Name	Chymase
Gene Name	CMA1
Cellular localization	Secreted. Cytoplasmic granule. Mast cell granules.
Purification	The antibody was affinity-purified from rabbit antiserum by affinity-chromatography using epitope-specific immunogen.
Clonality	Polyclonal

Concentration	1 mg/ml
Observed band	27kD
Human Gene ID	1215
Human Swiss-Prot Number	P23946
Alternative Names	CMA1; CYH; CYM; Chymase; Alpha-chymase; Mast cell protease I

Background

chymase 1(CMA1) Homo sapiens This gene encodes a chymotryptic serine proteinase that belongs to the peptidase family S1. It is expressed in mast cells and is thought to function in the degradation of the extracellular matrix, the regulation of submucosal gland secretion, and the generation of vasoactive peptides. In the heart and blood vessels, this protein, rather than angiotensin converting enzyme, is largely responsible for converting angiotensin I to the vasoactive peptide angiotensin II. Alternative splicing results in multiple variants. [provided by RefSeq, Apr 2015],



Western Blot analysis of mouse lung cells using Chymase Polyclonal Antibody. Secondary antibody(catalog#:RS0002) was diluted at 1:20000