

Actin- α cardiac muscle rabbit pAb**Cat#: orb766715 (Manual)**

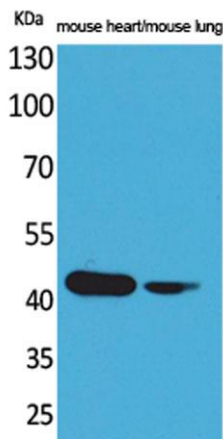
For research use only. Not intended for diagnostic use.

Product Name	Actin- α cardiac muscle rabbit pAb
Host species	Rabbit
Applications	WB;IHC;IF;ELISA
Species Cross-Reactivity	Human;Mouse;Rat
Recommended dilutions	Western Blot: 1/500 - 1/2000. IHC-p: 1:100-300 ELISA: 1/20000. Not yet tested in other applications.
Immunogen	Synthesized peptide derived from Actin- α cardiac muscle . at AA range: 1-80
Specificity	Actin- α cardiac muscle Polyclonal Antibody detects endogenous levels of Actin- α cardiac muscle protein.
Formulation	Liquid in PBS containing 50% glycerol, 0.5% BSA and 0.02% sodium azide..
Storage	Store at -20°C. Avoid repeated freeze-thaw cycles.
Protein Name	Actin alpha cardiac muscle 1
Gene Name	ACTC1
Cellular localization	Cytoplasm, cytoskeleton.
Purification	The antibody was affinity-purified from rabbit antiserum by affinity-chromatography using epitope-specific immunogen.
Clonality	Polyclonal

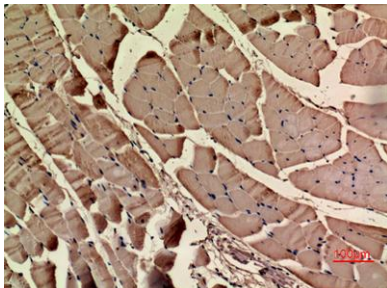
Concentration	1 mg/ml
Observed band	42kD
Human Gene ID	70
Human Swiss-Prot Number	P68032
Alternative Names	ACTC1; ACTC; Actin, alpha cardiac muscle 1; Alpha-cardiac actin

Background

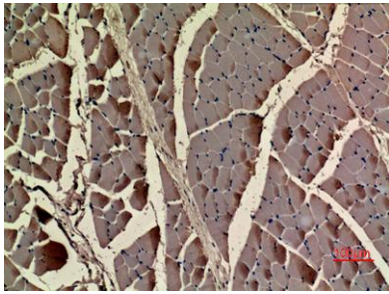
Actins are highly conserved proteins that are involved in various types of cell motility. Polymerization of globular actin (G-actin) leads to a structural filament (F-actin) in the form of a two-stranded helix. Each actin can bind to four others. The protein encoded by this gene belongs to the actin family which is comprised of three main groups of actin isoforms, alpha, beta, and gamma. The alpha actins are found in muscle tissues and are a major constituent of the contractile apparatus. Defects in this gene have been associated with idiopathic dilated cardiomyopathy (IDC) and familial hypertrophic cardiomyopathy (FHC). [provided by RefSeq, Jul 2008],



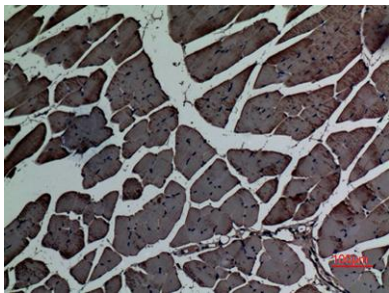
Western Blot analysis of mouse heart, mouse lung cells using Actin- α cardiac muscle Polyclonal Antibody. Secondary antibody(catalog#:RS0002) was diluted at 1:20000



Immunohistochemical analysis of paraffin-embedded rat-muscle, antibody was diluted at 1:100



Immunohistochemical analysis of paraffin-embedded rat-muscle, antibody was diluted at 1:100



Immunohistochemical analysis of paraffin-embedded mouse-muscle, antibody was diluted at 1:100