

SLC6A14 rabbit pAb**Cat#: orb766707 (Manual)**

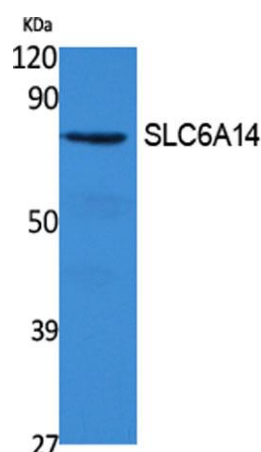
For research use only. Not intended for diagnostic use.

Product Name	SLC6A14 rabbit pAb
Host species	Rabbit
Applications	WB;IHC;IF;ELISA
Species Cross-Reactivity	Human;Rat;Mouse;
Recommended dilutions	Western Blot: 1/500 - 1/2000. IHC-p: 1:100-300 ELISA: 1/40000. Not yet tested in other applications.
Immunogen	Synthesized peptide derived from the C-terminal region of human SLC6A14.
Specificity	SLC6A14 Polyclonal Antibody detects endogenous levels of SLC6A14 protein.
Formulation	Liquid in PBS containing 50% glycerol, 0.5% BSA and 0.02% sodium azide..
Storage	Store at -20°C. Avoid repeated freeze-thaw cycles.
Protein Name	Sodium- and chloride-dependent neutral and basic amino acid transporter B(0+)
Gene Name	SLC6A14
Cellular localization	Membrane; Multi-pass membrane protein.
Purification	The antibody was affinity-purified from rabbit antiserum by affinity-chromatography using epitope-specific immunogen.
Clonality	Polyclonal

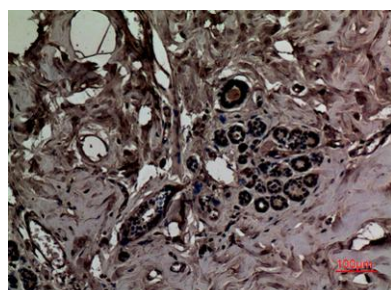
Concentration	1 mg/ml
Observed band	72kD
Human Gene ID	11254
Human Swiss-Prot Number	Q9UN76
Alternative Names	SLC6A14; Sodium- and chloride-dependent neutral and basic amino acid transporter B(0+; Amino acid transporter ATB0+; Solute carrier family 6 member 14

Background

This gene encodes a member of the solute carrier family 6. Members of this family are sodium and chloride dependent neurotransmitter transporters. The encoded protein transports both neutral and cationic amino acids. This protein may also function as a beta-alanine carrier. Mutations in this gene may be associated with X-linked obesity. A pseudogene of this gene is found on chromosome X.[provided by RefSeq, May 2010],



Western Blot analysis of extracts from 293 cells, using SLC6A14 Polyclonal Antibody. Secondary antibody(catalog#:RS0002) was diluted at 1:20000



Immunohistochemical analysis of paraffin-embedded human-breast, antibody was diluted at 1:100