

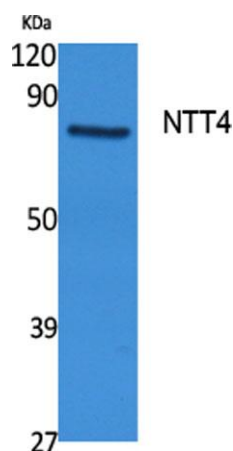
NTT4 rabbit pAb**Cat#: orb766702 (Manual)**

For research use only. Not intended for diagnostic use.

Product Name	NTT4 rabbit pAb
Host species	Rabbit
Applications	WB;ELISA
Species Cross-Reactivity	Human;Mouse;Rat
Recommended dilutions	Western Blot: 1/500 - 1/2000. ELISA: 1/5000. Not yet tested in other applications.
Immunogen	Synthesized peptide derived from NTT4 . at AA range: 240-320
Specificity	NTT4 Polyclonal Antibody detects endogenous levels of NTT4 protein.
Formulation	Liquid in PBS containing 50% glycerol, 0.5% BSA and 0.02% sodium azide..
Storage	Store at -20°C. Avoid repeated freeze-thaw cycles.
Protein Name	Sodium-dependent neutral amino acid transporter SLC6A17
Gene Name	SLC6A17
Cellular localization	Cytoplasmic vesicle, secretory vesicle, synaptic vesicle membrane ; Multi-pass membrane protein . Cell junction, synapse, postsynapse . Cell junction, synapse, presynapse . Localizes at synaptic junctions - at both pre- and post-synaptic sites - particularly in excitatory glutamatergic terminals. .
Purification	The antibody was affinity-purified from rabbit antiserum by affinity-chromatography using epitope-specific immunogen.

Clonality	Polyclonal
Concentration	1 mg/ml
Observed band	81kD
Human Gene ID	388662
Human Swiss-Prot Number	Q9H1V8
Alternative Names	SLC6A17; NTT4; Sodium-dependent neutral amino acid transporter SLC6A17; Sodium-dependent neurotransmitter transporter NTT4; Solute carrier family 6 member 17

Background The SLC6 family of proteins, which includes SLC6A17, acts as specific transporters for neurotransmitters, amino acids, and osmolytes like betaine, taurine, and creatine. SLC6 proteins are sodium cotransporters that derive the energy for solute transport from the electrochemical gradient for sodium ions (Hoglund et al., 2005 [PubMed 16125675]).[supplied by OMIM, Mar 2008],



Western Blot analysis of extracts from rat stomach, using NTT4 Polyclonal Antibody. Secondary antibody(catalog#:RS0002) was diluted at 1:20000