

**NF-L rabbit pAb****Cat#: orb766701 (Manual)**

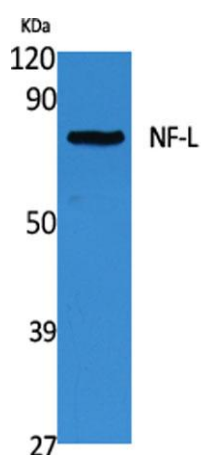
For research use only. Not intended for diagnostic use.

<b>Product Name</b>	NF-L rabbit pAb
<b>Host species</b>	Rabbit
<b>Applications</b>	WB;IHC;IF;ELISA
<b>Species Cross-Reactivity</b>	Human;Mouse;Rat
<b>Recommended dilutions</b>	Western Blot: 1/500 - 1/2000. IHC-p: 1:100-300 ELISA: 1/40000. Not yet tested in other applications.
<b>Immunogen</b>	Synthesized peptide derived from the C-terminal region of human NF-L.
<b>Specificity</b>	NF-L Polyclonal Antibody detects endogenous levels of NF-L protein.
<b>Formulation</b>	Liquid in PBS containing 50% glycerol, 0.5% BSA and 0.02% sodium azide..
<b>Storage</b>	Store at -20°C. Avoid repeated freeze-thaw cycles.
<b>Protein Name</b>	Neurofilament light polypeptide
<b>Gene Name</b>	NEFL
<b>Cellular localization</b>	Cell projection, axon . Cytoplasm, cytoskeleton .
<b>Purification</b>	The antibody was affinity-purified from rabbit antiserum by affinity-chromatography using epitope-specific immunogen.
<b>Clonality</b>	Polyclonal

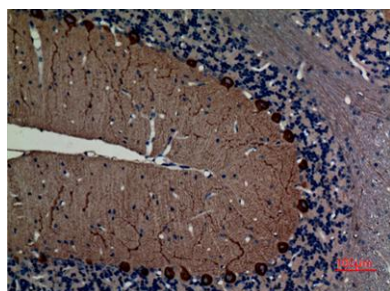
<b>Concentration</b>	1 mg/ml
<b>Observed band</b>	61kD
<b>Human Gene ID</b>	4747
<b>Human Swiss-Prot Number</b>	P07196
<b>Alternative Names</b>	NEFL; NF68; NFL; Neurofilament light polypeptide; NF-L; 68 kDa neurofilament protein; Neurofilament triplet L protein

### Background

Neurofilaments are type IV intermediate filament heteropolymers composed of light, medium, and heavy chains. Neurofilaments comprise the axoskeleton and they functionally maintain the neuronal caliber. They may also play a role in intracellular transport to axons and dendrites. This gene encodes the light chain neurofilament protein. Mutations in this gene cause Charcot-Marie-Tooth disease types 1F (CMT1F) and 2E (CMT2E), disorders of the peripheral nervous system that are characterized by distinct neuropathies. A pseudogene has been identified on chromosome Y. [provided by RefSeq, Oct 2008],



**Western Blot analysis of extracts from Jurkat cells, using NF-L Polyclonal Antibody. Secondary antibody(catalog#:RS0002) was diluted at 1:20000**



**Immunohistochemical analysis of paraffin-embedded rat-brain, antibody was diluted at 1:100**



Explore. Bioreagents.

[www.biorbyt.com](http://www.biorbyt.com)