

**IL-31R $\alpha$  rabbit pAb****Cat#: orb766696 (Manual)**

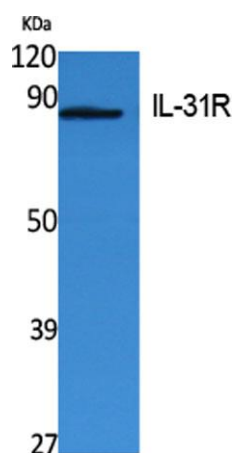
For research use only. Not intended for diagnostic use.

<b>Product Name</b>	IL-31R $\alpha$ rabbit pAb
<b>Host species</b>	Rabbit
<b>Applications</b>	WB;ELISA
<b>Species Cross-Reactivity</b>	Human;Rat;Mouse;
<b>Recommended dilutions</b>	Western Blot: 1/500 - 1/2000. ELISA: 1/40000. Not yet tested in other applications.
<b>Immunogen</b>	Synthesized peptide derived from the Internal region of human IL-31R $\alpha$ .
<b>Specificity</b>	IL-31R $\alpha$ Polyclonal Antibody detects endogenous levels of IL-31R $\alpha$ protein.
<b>Formulation</b>	Liquid in PBS containing 50% glycerol, 0.5% BSA and 0.02% sodium azide..
<b>Storage</b>	Store at -20°C. Avoid repeated freeze-thaw cycles.
<b>Protein Name</b>	Interleukin-31 receptor subunit alpha
<b>Gene Name</b>	IL31RA
<b>Cellular localization</b>	Cell membrane ; Single-pass type I membrane protein . Cell junction, synapse, presynaptic cell membrane . Cell projection, axon .
<b>Purification</b>	The antibody was affinity-purified from rabbit antiserum by affinity-chromatography using       epitope-specific immunogen.
<b>Clonality</b>	Polyclonal

<b>Concentration</b>	1 mg/ml
<b>Observed band</b>	82kD
<b>Human Gene ID</b>	133396
<b>Human Swiss-Prot Number</b>	Q8NI17
<b>Alternative Names</b>	IL31RA; CRL3; GPL; Interleukin-31 receptor subunit alpha; IL-31 receptor subunit alpha; IL-31R subunit alpha; IL-31R-alpha; IL-31RA; Cytokine receptor-like 3; GLM-R; hGLM-R; Gp130-like monocyte receptor; Gp130-like receptor; ZcytoR17

**Background**

The protein encoded by this gene belongs to the type I cytokine receptor family. This receptor, with homology to gp130, is expressed on monocytes, and is involved in IL-31 signaling via activation of STAT-3 and STAT-5. It functions either as a monomer, or as part of a receptor complex with oncostatin M receptor (OSMR). Several alternatively spliced transcript variants encoding different isoforms have been noted for this gene.[provided by RefSeq, Jun 2011],



**Western Blot analysis of extracts from Jurkat cells, using IL-31R Polyclonal Antibody. Secondary antibody(catalog#:RS0002) was diluted at 1:20000**