

NPRL2 rabbit pAb

Cat#: orb766691 (Manual)

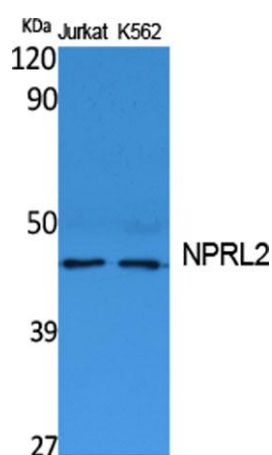
For research use only. Not intended for diagnostic use.

Product Name	NPRL2 rabbit pAb
Host species	Rabbit
Applications	WB;ELISA
Species Cross-Reactivity	Human;Mouse;Rat
Recommended dilutions	Western Blot: 1/500 - 1/2000. ELISA: 1/20000. Not yet tested in other applications.
Immunogen	Synthesized peptide derived from the C-terminal region of human NPRL2.
Specificity	NPRL2 Polyclonal Antibody detects endogenous levels of NPRL2 protein.
Formulation	Liquid in PBS containing 50% glycerol, 0.5% BSA and 0.02% sodium azide..
Storage	Store at -20°C. Avoid repeated freeze-thaw cycles.
Protein Name	Nitrogen permease regulator 2-like protein
Gene Name	NPRL2
Cellular localization	Lysosome membrane . Localization to lysosomes is amino acid-independent. .
Purification	The antibody was affinity-purified from rabbit antiserum by affinity-chromatography using epitope-specific immunogen.
Clonality	Polyclonal

Concentration	1 mg/ml
Observed band	43kD
Human Gene ID	10641
Human Swiss-Prot Number	Q8WTW4
Alternative Names	NPRL2; TUSC4; Nitrogen permease regulator 2-like protein; NPR2-like protein; Gene 21 protein; G21 protein; Tumor suppressor candidate 4

Background

function:Suppresses Src-dependent tyrosine phosphorylation and activation of PDPK1 and its downstream signaling. Down-regulates PDPK1 kinase activity by interfering with tyrosine phosphorylation at the Tyr-9 Tyr-373 and Tyr-376 residues. May act as a tumor suppressor. Suppresses cell growth and enhanced sensitivity to various anticancer drugs.,similarity:Belongs to the NPR2 family.,subunit:Interacts with PDPK1.,tissue specificity:Most abundant in skeletal muscle, followed by brain, liver and pancreas, with lower amounts in lung, kidney, placenta and heart. Expressed in most lung cancer cell lines tested.,



Western Blot analysis of extracts from Jurkat, K562 cells, using NPRL2 Polyclonal Antibody. Secondary antibody(catalog#:RS0002) was diluted at 1:20000