

ZNF227 rabbit pAb**Cat#: orb766690 (Manual)**

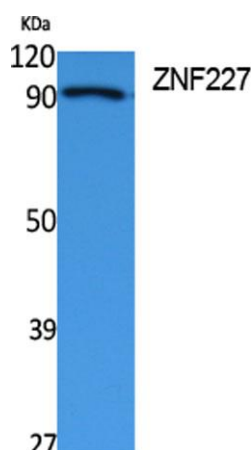
For research use only. Not intended for diagnostic use.

Product Name	ZNF227 rabbit pAb
Host species	Rabbit
Applications	WB;IHC;IF;ELISA
Species Cross-Reactivity	Human;Rat;Mouse;
Recommended dilutions	Western Blot: 1/500 - 1/2000. IHC-p: 1:100-300 ELISA: 1/40000. Not yet tested in other applications.
Immunogen	Synthesized peptide derived from the Internal region of human ZNF227.
Specificity	ZNF227 Polyclonal Antibody detects endogenous levels of ZNF227 protein.
Formulation	Liquid in PBS containing 50% glycerol, 0.5% BSA and 0.02% sodium azide..
Storage	Store at -20°C. Avoid repeated freeze-thaw cycles.
Protein Name	Zinc finger protein 227
Gene Name	ZNF227
Cellular localization	Nucleus .
Purification	The antibody was affinity-purified from rabbit antiserum by affinity-chromatography using epitope-specific immunogen.
Clonality	Polyclonal

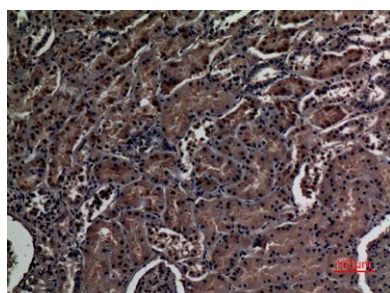
Concentration	1 mg/ml
Observed band	92kD
Human Gene ID	7770
Human Swiss-Prot Number	Q86WZ6
Alternative Names	ZNF227; Zinc finger protein 227

Background

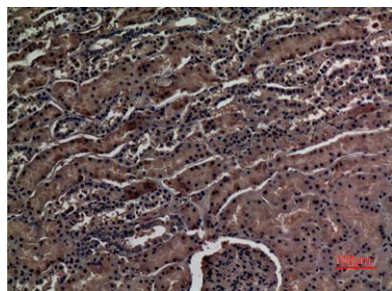
function:May be involved in transcriptional regulation.,similarity:Belongs to the krueppel C2H2-type zinc-finger protein family.,similarity:Contains 1 KRAB domain.,similarity:Contains 19 C2H2-type zinc fingers.,



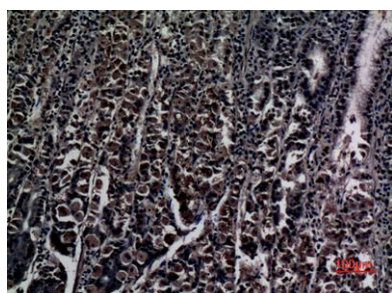
Western Blot analysis of extracts from Jurkat cells, using ZNF227 Polyclonal Antibody. Secondary antibody(catalog#:RS0002) was diluted at 1:20000 cells nucleus extracted by Minute TM Cytoplasmic and Nuclear Fractionation kit (SC-003,Inventbiotech,MN,USA).



Immunohistochemical analysis of paraffin-embedded human-kidney, antibody was diluted at 1:100



Immunohistochemical analysis of paraffin-embedded human-kidney, antibody was diluted at 1:100



Immunohistochemical analysis of paraffin-embedded human-stomach, antibody was diluted at 1:100