

SV2C rabbit pAb**Cat#: orb766682 (Manual)**

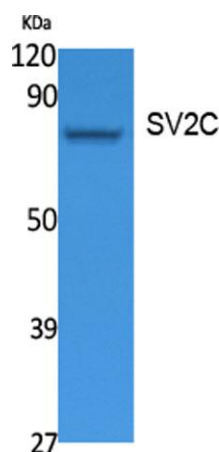
For research use only. Not intended for diagnostic use.

Product Name	SV2C rabbit pAb
Host species	Rabbit
Applications	WB;IHC;IF;ELISA
Species Cross-Reactivity	Human;Mouse;Rat
Recommended dilutions	Western Blot: 1/500 - 1/2000. IHC-p: 1:100-300 ELISA: 1/20000. Not yet tested in other applications.
Immunogen	Synthesized peptide derived from the Internal region of human SV2C.
Specificity	SV2C Polyclonal Antibody detects endogenous levels of SV2C protein.
Formulation	Liquid in PBS containing 50% glycerol, 0.5% BSA and 0.02% sodium azide..
Storage	Store at -20°C. Avoid repeated freeze-thaw cycles.
Protein Name	Synaptic vesicle glycoprotein 2C
Gene Name	SV2C
Cellular localization	Cytoplasmic vesicle, secretory vesicle, synaptic vesicle membrane ; Multi-pass membrane protein . Enriched in small synaptic vesicles and adrenal microsomes, not present in chromaffin granules. Associated with both insulin granules and synaptic-like micro
Purification	The antibody was affinity-purified from rabbit antiserum by affinity-chromatography using epitope-specific immunogen.

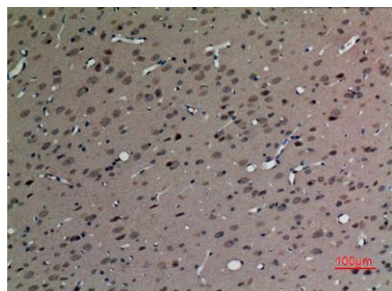
Clonality	Polyclonal
Concentration	1 mg/ml
Observed band	82kD
Human Gene ID	22987
Human Swiss-Prot Number	Q496J9
Alternative Names	SV2C; KIAA1054; Synaptic vesicle glycoprotein 2C

Background

function: Plays a role in the control of regulated secretion in neural and endocrine cells, enhancing selectively low-frequency neurotransmission. Positively regulates vesicle fusion by maintaining the readily releasable pool of secretory vesicles. PTM: N-glycosylated. similarity: Belongs to the major facilitator superfamily. subcellular location: Enriched in small synaptic vesicles and adrenal microsomes, not present in chromaffin granules. Associated with both insulin granules and synaptic-like microvesicles in insulin-secreting cells of the pancreas. subunit: Interacts with SYT1 in a calcium-dependent manner.



Western Blot analysis of extracts from Jurkat cells, using SV2C Polyclonal Antibody. Secondary antibody(catalog#:RS0002) was diluted at 1:20000



Immunohistochemical analysis of paraffin-embedded rat-brain, antibody was diluted at 1:100