

Rab 26 rabbit pAb**Cat#: orb766680 (Manual)**

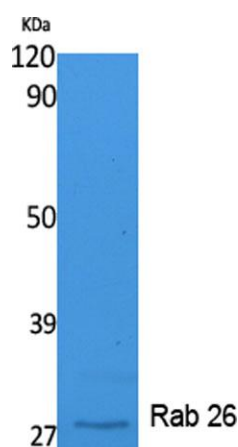
For research use only. Not intended for diagnostic use.

Product Name	Rab 26 rabbit pAb
Host species	Rabbit
Applications	WB;IHC;IF;ELISA
Species Cross-Reactivity	Human;Mouse;Rat
Recommended dilutions	Western Blot: 1/500 - 1/2000. IHC-p: 1:100-300 ELISA: 1/40000. Not yet tested in other applications.
Immunogen	Synthesized peptide derived from Rab 26 . at AA range: 180-256
Specificity	Rab 26 Polyclonal Antibody detects endogenous levels of Rab 26 protein.
Formulation	Liquid in PBS containing 50% glycerol, 0.5% BSA and 0.02% sodium azide..
Storage	Store at -20°C. Avoid repeated freeze-thaw cycles.
Protein Name	Ras-related protein Rab-26
Gene Name	RAB26
Cellular localization	Golgi apparatus membrane ; Lipid-anchor ; Cytoplasmic side . Cytoplasmic vesicle, secretory vesicle membrane ; Lipid-anchor ; Cytoplasmic side . Not localized at the plasma membrane (By similarity). Inhibition of S-geranylgeranyl cysteine formation abolishes membrane location. .
Purification	The antibody was affinity-purified from rabbit antiserum by affinity-chromatography using epitope-specific immunogen.

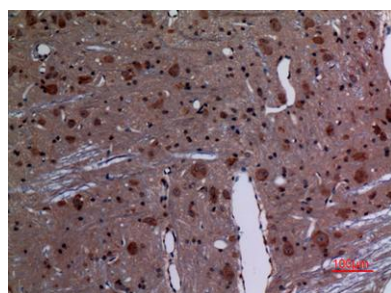
Clonality	Polyclonal
Concentration	1 mg/ml
Observed band	27kD
Human Gene ID	25837
Human Swiss-Prot Number	Q9ULW5
Alternative Names	RAB26; Ras-related protein Rab-26

Background

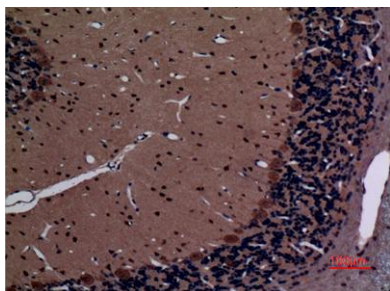
Members of the RAB protein family, including RAB26, are important regulators of vesicular fusion and trafficking. The RAB family of small G proteins regulates intercellular vesicle trafficking, including exocytosis, endocytosis, and recycling (summary by Seki et al., 2000 [PubMed 11043516]).[supplied by OMIM, Nov 2010],



Western Blot analysis of extracts from K562 cells, using Rab 26 Polyclonal Antibody. Secondary antibody(catalog#:RS0002) was diluted at 1:20000



Immunohistochemical analysis of paraffin-embedded rat-brain, antibody was diluted at 1:100



Immunohistochemical analysis of paraffin-embedded rat-brain, antibody was diluted at 1:100