

Nup88 rabbit pAb**Cat#: orb766678 (Manual)**

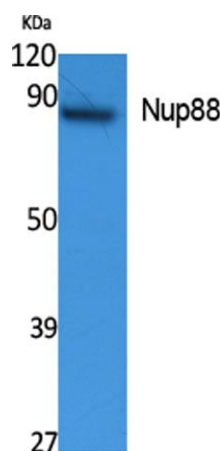
For research use only. Not intended for diagnostic use.

Product Name	Nup88 rabbit pAb
Host species	Rabbit
Applications	WB;ELISA
Species Cross-Reactivity	Human;Mouse
Recommended dilutions	Western Blot: 1/500 - 1/2000. ELISA: 1/20000. Not yet tested in other applications.
Immunogen	Synthesized peptide derived from Nup88 . at AA range: 330-410
Specificity	Nup88 Polyclonal Antibody detects endogenous levels of Nup88 protein.
Formulation	Liquid in PBS containing 50% glycerol, 0.5% BSA and 0.02% sodium azide..
Storage	Store at -20°C. Avoid repeated freeze-thaw cycles.
Protein Name	Nuclear pore complex protein Nup88
Gene Name	NUP88
Cellular localization	Nucleus, nuclear pore complex .
Purification	The antibody was affinity-purified from rabbit antiserum by affinity-chromatography using epitope-specific immunogen.
Clonality	Polyclonal

Concentration	1 mg/ml
Observed band	83kD
Human Gene ID	4927
Human Swiss-Prot Number	Q99567
Alternative Names	NUP88; Nuclear pore complex protein Nup88; 88 kDa nucleoporin; Nucleoporin Nup88

Background

The nuclear pore complex is a massive structure that extends across the nuclear envelope, forming a gateway that regulates the flow of macromolecules between the nucleus and the cytoplasm. Nucleoporins, a family of 50 to 100 proteins, are the main components of the nuclear pore complex in eukaryotic cells. The protein encoded by this gene belongs to the nucleoporin family and is associated with the oncogenic nucleoporin CAN/Nup214 in a dynamic subcomplex. This protein is also overexpressed in a large number of malignant neoplasms and precancerous dysplasias. Alternative splicing results in multiple transcript variants encoding different isoforms. [provided by RefSeq, Mar 2016],



Western Blot analysis of extracts from K562 cells, using Nup88 Polyclonal Antibody. Secondary antibody(catalog#:RS0002) was diluted at 1:20000